

SMC4 Antibody AbVantage™ Pack

Produced in Rabbit

Antigen Affinity Purified

Catalog No. A310-017A

Protein ID NP_005487.2

Gene ID 10051



CONTENTS Rabbit anti-SMC4 A300-063A
Rabbit anti-SMC4 A300-064A

APPLICATIONS WB, IP, ICC, IF, PLA

REACTIVITY Human

STORAGE / SHELF LIFE 2 - 8° C / 1 year from date of receipt

PHYSICAL STATE Liquid

ORIGIN USA

NOTE Centrifuge tube to remove product from lid. Optimal working dilutions should be determined experimentally by the investigator. Prepare working dilution immediately before use.

SMC4 Antibody

Rabbit Polyclonal

Antigen Affinity Purified

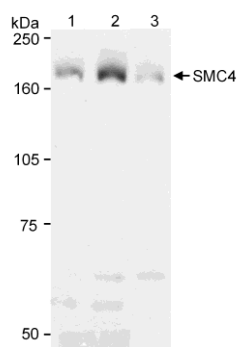
Catalog No. A300-063A

Protein ID NP_005487.2

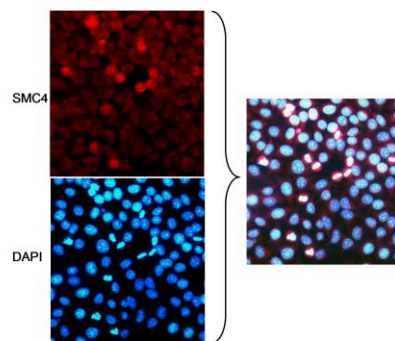
Gene ID 10051



APPLICATIONS	WB, ICC, IF						
REACTIVITY TESTED	Human						
PRESUMED REACTIVITY	Based on 100% sequence identity, this antibody is predicted to react with Mouse, Rat, Dog, Horse, Rabbit, Guinea pig_10141, Panda, Rhesus Monkey, Gorilla, Chimpanzee, White-tufted-ear marmoset, Crab-eating macaque, European domestic ferret, African elephant and Northern white-cheeked gibbon.						
ISOTYPE	IgG						
AMOUNT	0.1 ml at 1 mg/ml						
STORAGE/SHELF LIFE	2 - 8° C / 1 year from date of receipt						
PHYSICAL STATE	Liquid						
BUFFER	Tris-citrate/phosphate buffer, pH 7 to 8 containing 0.1% Sodium Azide						
ORIGIN	USA						
PRODUCTION PROCEDURES	<p>Antibody was affinity purified using an epitope specific to SMC4 immobilized on solid support.</p> <p>The epitope recognized by A300-063A maps to a region between residues 600 and 650 of human Structural Maintenance of Chromosomes 4 using the numbering given in entry NP_005487.2 (GeneID 10051).</p> <p>Immunoglobulin concentration was determined by extinction coefficient: absorbance at 280 nm of 1.4 equals 1.0 mg of IgG.</p>						
APPLICATIONS	<p>Centrifuge tube to remove product from lid. Optimal working dilutions should be determined experimentally by the investigator. Prepare working dilution immediately before use.</p> <table><tr><td>Western Blot</td><td>1:1,000 - 1:10,000</td></tr><tr><td>Immunocytochemistry</td><td>1:500 to 1:2,000</td></tr><tr><td>Immunofluorescence</td><td>1:500 to 1:2,000</td></tr></table>	Western Blot	1:1,000 - 1:10,000	Immunocytochemistry	1:500 to 1:2,000	Immunofluorescence	1:500 to 1:2,000
Western Blot	1:1,000 - 1:10,000						
Immunocytochemistry	1:500 to 1:2,000						
Immunofluorescence	1:500 to 1:2,000						
ADDITIONAL INFO	<p>http://www.bethyl.com/product/A300-063A</p> <p>Use the link above to view a current list of citations and other product specific information.</p>						



Detection of Human SMC4 by Western Blot. *Samples:* Whole cell lysate (90 µg) from 293T cells (lane 1), SMC4 transfected 293T cells (lane 2) or normal human lymphoblasts (lane 3) separated on an 8% SDS-PAGE gel. *Antibodies:* Affinity purified rabbit anti-SMC4 A300-063A used 0.2 µg/ml and goat anti-rabbit HRP used at a dilution of 1:20,000. *Detection:* Chemiluminescence with 5 second.



Localization of SMC4 to Mitotic Chromosomes by Immunofluorescence. *Samples:* HeLa cells grown on coverslips, fixed with methanol/acetone and blocked with 3% BSA in PBS. *Antibody:* Affinity purified rabbit anti-SMC4 antibody A300-063A used at 5 µg/ml. *Detection:* Rhodamine labeled anti-rabbit secondary antibody. Cells were counterstained with DAPI.

MATERIAL SAFETY DATA SHEET

CONTENTS

This product contains Rabbit immunoglobulin G (IgG) protein in Tris-citrate/phosphate buffer, pH 7 to 8 containing 0.1% Sodium Azide.

INGREDIENT DESCRIPTIONS

HAZARDOUS:

Sodium Azide (NaN₃): Azide forms explosive chemical compounds with lead and copper plumbing. Care must be taken to wash waste down drains with large volumes of water. LD₅₀ oral mouse 27 mg/kg. Wash all affected areas with large volumes of water and if swallowed consult your physician immediately.

SMC4 Antibody

Rabbit Polyclonal

Antigen Affinity Purified

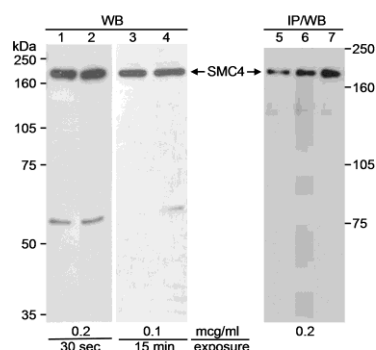
Catalog No. A300-064A

Protein ID NP_005487.2

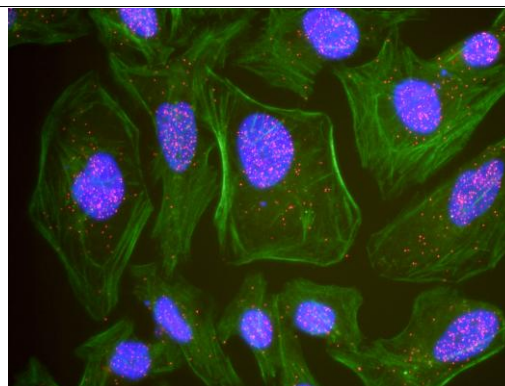
Gene ID 10051



APPLICATIONS	WB, IP, ICC, IF, PLA										
REACTIVITY TESTED	Human										
PRESUMED REACTIVITY	Based on 100% sequence identity, this antibody is predicted to react with Rat, Bovine, Rabbit, Guinea pig_10141, Pig, Orangutan, Rhesus Monkey, Gorilla, Chimpanzee, White-tufted-ear marmoset, Crab-eating macaque, African elephant, Chinese hamster, Small-eared galago and Northern white-cheeked gibbon.										
ISOTYPE	IgG										
AMOUNT	0.1 ml at 1 mg/ml										
STORAGE/SHELF LIFE	2 - 8° C / 1 year from date of receipt										
PHYSICAL STATE	Liquid										
BUFFER	Tris-citrate/phosphate buffer, pH 7 to 8 containing 0.1% Sodium Azide										
ORIGIN	USA										
PRODUCTION PROCEDURES	<p>Antibody was affinity purified using an epitope specific to SMC4 immobilized on solid support.</p> <p>The epitope recognized by A300-064A maps to a region between residue 1225 and the C-terminus (residue 1288) of human Structural Maintenance of Chromosomes 4 using the numbering given in entry NP_005487.2 (GeneID 10051).</p> <p>Immunoglobulin concentration was determined by extinction coefficient: absorbance at 280 nm of 1.4 equals 1.0 mg of IgG.</p>										
APPLICATIONS	<p>Centrifuge tube to remove product from lid. Optimal working dilutions should be determined experimentally by the investigator. Prepare working dilution immediately before use.</p> <table><tr><td>Western Blot</td><td>1:1,000 - 1:10,000</td></tr><tr><td>Immunoprecipitation</td><td>2 to 10 µg/mg lysate</td></tr><tr><td>Immunocytochemistry</td><td>1:200 to 1:400</td></tr><tr><td>Immunofluorescence</td><td>1:200 to 1:400</td></tr><tr><td>Proximity Ligation Assay</td><td>1:1,000 - 1:20,000</td></tr></table>	Western Blot	1:1,000 - 1:10,000	Immunoprecipitation	2 to 10 µg/mg lysate	Immunocytochemistry	1:200 to 1:400	Immunofluorescence	1:200 to 1:400	Proximity Ligation Assay	1:1,000 - 1:20,000
Western Blot	1:1,000 - 1:10,000										
Immunoprecipitation	2 to 10 µg/mg lysate										
Immunocytochemistry	1:200 to 1:400										
Immunofluorescence	1:200 to 1:400										
Proximity Ligation Assay	1:1,000 - 1:20,000										
APPLICATION NOTES	PLA validation was performed using Duolink In Situ kits, buffers and reagents (Cat # OLK-*).										
ADDITIONAL INFO	<p>http://www.bethyl.com/product/A300-064A</p> <p>Use the link above to view a current list of citations and other product specific information.</p>										



Detection of Human SMC4 by Western Blot and Immunoprecipitation. *Samples:* Whole cell lysate (90 µg for WB; 0.5 mg for IP/WB) from 293T cells (lanes 1, 3 and 5), normal human lymphoblasts (lane 2) or SMC4 transfected 239T cells (lanes 4, 6 and 7) separated on an 8% SDS-PAGE gel. *Antibodies:* Affinity purified rabbit anti-SMC4 A300-064A used at 0.2 or 0.1 µg/ml for WB and 5 µg for IP. *Detection:* Chemiluminescence with the indicated exposure times.



This antibody is qualified for the Proximity Ligation Assay (PLA). PLA uses paired antibodies, so please refer to the PLA page of our website for specific imaging obtained by pairing this antibody with other qualified antibodies. The above image shows representative results for PLA using three color fluorescence, including DAPI stained nuclei (blue), phalloidin stained cytoplasmic F-actin (green), and PLA positive signal (red).

MATERIAL SAFETY DATA SHEET

CONTENTS

This product contains Rabbit immunoglobulin G (IgG) protein in Tris-citrate/phosphate buffer, pH 7 to 8 containing 0.1% Sodium Azide.

INGREDIENT DESCRIPTIONS

HAZARDOUS:

Sodium Azide (NaN₃): Azide forms explosive chemical compounds with lead and copper plumbing. Care must be taken to wash waste down drains with large volumes of water. LD50 oral mouse 27 mg/kg. Wash all affected areas with large volumes of water and if swallowed consult your physician immediately.