

XRCC1 Antibody AbVantage™ Pack

Produced in Rabbit

Antigen Affinity Purified

Catalog No. A310-015A

Protein ID NP_006288.1

Gene ID 7515



CONTENTS	Rabbit anti-XRCC1	A300-065A
	Rabbit anti-XRCC1 pSer518/pSer529/pSer523	A300-059A
	Rabbit anti-XRCC1 pSer461	A300-147A
	Rabbit anti-XRCC1 pSer475 (BL608)	A300-227A
	Rabbit anti-XRCC1 pSer485/pThr488 (BL610)	A300-231A

APPLICATIONS WB, IP, ICC, IF, IHC-P

REACTIVITY Human, Mouse

STORAGE / SHELF LIFE 2 - 8° C / 1 year from date of receipt

PHYSICAL STATE Liquid

ORIGIN USA

NOTE Centrifuge tube to remove product from lid. Optimal working dilutions should be determined experimentally by the investigator. Prepare working dilution immediately before use.

XRCC1 Antibody

Rabbit Polyclonal

Antigen Affinity Purified

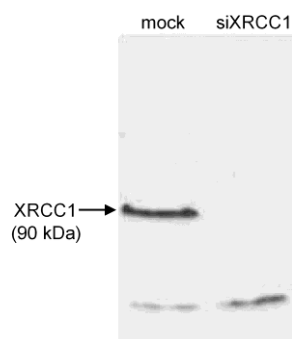
Catalog No. A300-065A

Protein ID NP_006288.1

Gene ID 7515



APPLICATIONS	WB, IP, ICC, IF								
REACTIVITY TESTED	Human								
PRESUMED REACTIVITY	Based on 100% sequence identity, this antibody is predicted to react with Mouse, Rat, Bovine, Dog, Horse, Guinea pig_10141, Pig, Orangutan, Rhesus Monkey, Gorilla, Chimpanzee, White-tufted-ear marmoset, Crab-eating macaque, European domestic ferret, African elephant and Thirteen-lined ground squirrel.								
ISOTYPE	IgG								
AMOUNT	0.1 ml at 1 mg/ml								
STORAGE/SHELF LIFE	2 - 8° C / 1 year from date of receipt								
PHYSICAL STATE	Liquid								
BUFFER	Tris-citrate/phosphate buffer, pH 7 to 8 containing 0.1% Sodium Azide								
ORIGIN	USA								
PRODUCTION PROCEDURES	<p>Antibody was affinity purified using an epitope specific to XRCC1 immobilized on solid support.</p> <p>The epitope recognized by A300-065A maps to a region between residue 600 and the C-terminus (residue 633) of human X-ray Repair Cross Complementing protein 1 using the numbering given in entry NP_006288.1 (GeneID 7515).</p> <p>Immunoglobulin concentration was determined by extinction coefficient: absorbance at 280 nm of 1.4 equals 1.0 mg of IgG.</p>								
APPLICATIONS	<p>Centrifuge tube to remove product from lid. Optimal working dilutions should be determined experimentally by the investigator. Prepare working dilution immediately before use.</p> <table><tr><td>Western Blot</td><td>1:1,000 - 1:10,000</td></tr><tr><td>Immunoprecipitation</td><td>2 to 6 µg/mg of lysate</td></tr><tr><td>Immunocytochemistry</td><td>1:200 - 1:500</td></tr><tr><td>Immunofluorescence</td><td>1:200 - 1:500</td></tr></table>	Western Blot	1:1,000 - 1:10,000	Immunoprecipitation	2 to 6 µg/mg of lysate	Immunocytochemistry	1:200 - 1:500	Immunofluorescence	1:200 - 1:500
Western Blot	1:1,000 - 1:10,000								
Immunoprecipitation	2 to 6 µg/mg of lysate								
Immunocytochemistry	1:200 - 1:500								
Immunofluorescence	1:200 - 1:500								
ADDITIONAL INFO	<p>http://www.bethyl.com/product/A300-065A</p> <p>Use the link above to view a current list of citations and other product specific information.</p>								



Detection of Human XRCC1 by Western Blot. *Sample:* Whole cell extract (50 µg) from mock treated or siRNA treated HeLa cells. *Antibody:* Affinity purified rabbit anti-XRCC1 A300-065A used at 1 µg/ml. *Detection:* Chemiluminescence.

MATERIAL SAFETY DATA SHEET

CONTENTS

This product contains Rabbit immunoglobulin G (IgG) protein in Tris-citrate/phosphate buffer, pH 7 to 8 containing 0.1% Sodium Azide.

INGREDIENT DESCRIPTIONS

HAZARDOUS:

Sodium Azide (NaN₃): Azide forms explosive chemical compounds with lead and copper plumbing. Care must be taken to wash waste down drains with large volumes of water. LD50 oral mouse 27 mg/kg. Wash all affected areas with large volumes of water and if swallowed consult your physician immediately.

Phospho XRCC1 (S518/T519/T523) Antibody

Rabbit Polyclonal

Antigen Affinity Purified

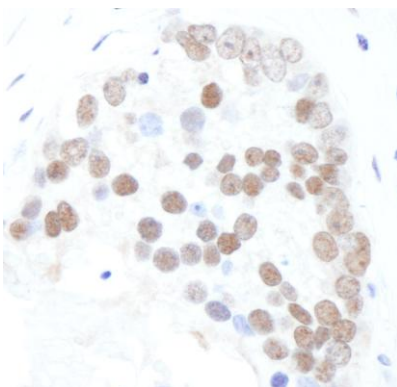
Catalog No. A300-059A

Protein ID P18887

Gene ID 7515



APPLICATIONS	WB, IHC-P, IF						
REACTIVITY TESTED	Human						
PRESUMED REACTIVITY	Based on 100% sequence identity, this antibody is predicted to react with Gorilla and Chimpanzee.						
ISOTYPE	IgG						
AMOUNT	0.1 ml at 1 mg/ml						
STORAGE/SHELF LIFE	2 - 8° C / 1 year from date of receipt						
PHYSICAL STATE	Liquid						
BUFFER	Tris-citrate/phosphate buffer, pH 7 to 8 containing 0.1% Sodium Azide						
ORIGIN	USA						
PRODUCTION PROCEDURES	<p>Antibody was affinity purified using an epitope specific to phosphorylation at Ser 518, Thr 519 and Thr 523 of XRCC1 immobilized on solid support.</p> <p>The epitope recognized by A300-059A maps to a region of surrounding residues Ser 518, Thr 519 and Thr 523 of human X-ray Repair Complementing protein 1 using the numbering given in SwissProt entry P18887 (GeneID 7515).</p> <p>Immunoglobulin concentration was determined by extinction coefficient: absorbance at 280 nm of 1.4 equals 1.0 mg of IgG.</p>						
APPLICATIONS	<p>Centrifuge tube to remove product from lid. Optimal working dilutions should be determined experimentally by the investigator. Prepare working dilution immediately before use.</p> <table><tr><td>Western Blot</td><td>1:1,000 - 1:5,000</td></tr><tr><td>Immunohistochemistry</td><td>1:2,000 to 1:10,000. Epitope retrieval with citrate buffer pH6.0 is recommended for FFPE tissue sections.</td></tr><tr><td>Immunofluorescence</td><td>1:1,000 to 1:5,000</td></tr></table>	Western Blot	1:1,000 - 1:5,000	Immunohistochemistry	1:2,000 to 1:10,000. Epitope retrieval with citrate buffer pH6.0 is recommended for FFPE tissue sections.	Immunofluorescence	1:1,000 to 1:5,000
Western Blot	1:1,000 - 1:5,000						
Immunohistochemistry	1:2,000 to 1:10,000. Epitope retrieval with citrate buffer pH6.0 is recommended for FFPE tissue sections.						
Immunofluorescence	1:1,000 to 1:5,000						
APPLICATION NOTES	IHC validation was performed using Immunohistochemistry Accessory Kit (Cat. # IHC-101).						
IHC HUMAN CONTROLS	Bone Marrow-Metastatic Carcinoma, Breast Carcinoma, Colon Carcinoma, Ovarian Carcinoma, Prostate Carcinoma, Stomach Adenocarcinoma						
ADDITIONAL INFO	<p>http://www.bethyl.com/product/A300-059A</p> <p>Use the link above to view a current list of citations and other product specific information.</p>						



Detection of Human Phospho-ERCC1 (S518/T519/T523) by Immunohistochemistry. *Sample:* FFPE section of human prostate carcinoma. *Antibody:* Affinity purified rabbit anti-Phospho-XRCC1 (S518/T519/T523) (Cat. No. A300-059A Lot1) used at a dilution of 1:5,000 (0.2µg/ml). *Detection:* DAB

MATERIAL SAFETY DATA SHEET

CONTENTS

This product contains Rabbit immunoglobulin G (IgG) protein in Tris-citrate/phosphate buffer, pH 7 to 8 containing 0.1% Sodium Azide.

INGREDIENT DESCRIPTIONS

HAZARDOUS:

Sodium Azide (NaN₃): Azide forms explosive chemical compounds with lead and copper plumbing. Care must be taken to wash waste down drains with large volumes of water. LD50 oral mouse 27 mg/kg. Wash all affected areas with large volumes of water and if swallowed consult your physician immediately.

Phospho XRCC1 (S461) Antibody

Rabbit Polyclonal

Antigen Affinity Purified

Catalog No. A300-147A

Protein ID P18887

Gene ID 7515



APPLICATIONS	WB, IHC-P, IF
REACTIVITY TESTED	Human
PRESUMED REACTIVITY	Based on 100% sequence identity, this antibody is predicted to react with Orangutan, Rhesus Monkey, Gorilla, Chimpanzee, Crab-eating macaque and Northern white-cheeked gibbon.
ISOTYPE	IgG
AMOUNT	0.1 ml at 1 mg/ml
STORAGE/SHELF LIFE	2 - 8° C / 1 year from date of receipt
PHYSICAL STATE	Liquid
BUFFER	Tris-citrate/phosphate buffer, pH 7 to 8 containing 0.1% Sodium Azide
ORIGIN	USA
PRODUCTION PROCEDURES	Antibody was affinity purified using an epitope specific to phosphorylation at Ser 461 of XRCC1 immobilized on solid support.

The epitope recognized by A300-147A maps to a region of surrounding residue Ser 416 of human X-ray Repair Complementing protein 1 using the numbering given in SwissProt entry P18887 (GeneID 7515).

Immunoglobulin concentration was determined by extinction coefficient: absorbance at 280 nm of 1.4 equals 1.0 mg of IgG.

APPLICATIONS	Centrifuge tube to remove product from lid. Optimal working dilutions should be determined experimentally by the investigator. Prepare working dilution immediately before use.
Western Blot	1:1,000 - 1:5,000
Immunohistochemistry	1:500 to 1:2,000. Epitope retrieval with citrate buffer pH6.0 is recommended for FFPE tissue sections.
Immunofluorescence	1:250 to 1:1,000.

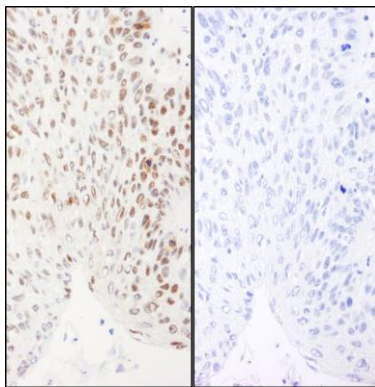
APPLICATION NOTES IHC validation was performed using Immunohistochemistry Accessory Kit (Cat. # IHC-101).

IHC HUMAN CONTROLS Breast Carcinoma, Laryngeal Squamous Cell Carcinoma, Ovarian Carcinoma, Prostate Carcinoma

ADDITIONAL INFO <http://www.bethyl.com/product/A300-147A>

Use the link above to view a current list of citations and other product specific information.

Phospho XRCC1 (S461) Antibody: A300-147A



Detection of Human Phospho XRCC1 (S461) by Immunohistochemistry. *Samples:* FFPE serial sections of human larynx squamous cell carcinoma. Mock phosphatase treated section (left) and calf intestinal phosphatase-treated section (right). *Antibody:* Affinity purified rabbit anti-Phospho XRCC1 (S461). (Cat. No. A300-147A Lot1) used at a dilution of 1:1,000 (1µg/ml. *Detection:* DAB

MATERIAL SAFETY DATA SHEET

CONTENTS

This product contains Rabbit immunoglobulin G (IgG) protein in Tris-citrate/phosphate buffer, pH 7 to 8 containing 0.1% Sodium Azide.

INGREDIENT DESCRIPTIONS

HAZARDOUS:

Sodium Azide (NaN_3): Azide forms explosive chemical compounds with lead and copper plumbing. Care must be taken to wash waste down drains with large volumes of water. LD50 oral mouse 27 mg/kg. Wash all affected areas with large volumes of water and if swallowed consult your physician immediately.

Phospho XRCC1 (S475) Antibody

Rabbit Polyclonal

Antigen Affinity Purified

Catalog No. A300-227A

Protein ID P18887

Gene ID 7515



APPLICATIONS	WB
REACTIVITY TESTED	Human
PRESUMED REACTIVITY	Based on 100% sequence identity, this antibody is predicted to react with Gorilla and Chimpanzee.
AMOUNT	0.1 ml at 1 mg/ml
STORAGE/SHELF LIFE	2 - 8° C / 1 year from date of receipt
PHYSICAL STATE	Liquid
BUFFER	Tris-citrate/phosphate buffer, pH 7 to 8 containing 0.1% Sodium Azide
ORIGIN	USA
PRODUCTION PROCEDURES	<p>Antibody was affinity purified using an epitope specific to phosphorylation at Ser 475 of XRCC1 immobilized on solid support.</p> <p>The epitope recognized by A300-227A maps to a region of surrounding residue Ser 475 of human X-ray Repair Complementing protein 1 using the numbering given in SwissProt entry P18887 (GeneID 7515).</p> <p>Immunoglobulin concentration was determined by extinction coefficient: absorbance at 280 nm of 1.4 equals 1.0 mg of IgG.</p>
APPLICATIONS	<p>Centrifuge tube to remove product from lid. Optimal working dilutions should be determined experimentally by the investigator. Prepare working dilution immediately before use.</p> <p>Western Blot 1:1,000 - 1:5,000</p>
ADDITIONAL INFO	<p>http://www.bethyl.com/product/A300-227A</p> <p>Use the link above to view a current list of citations and other product specific information.</p>

MATERIAL SAFETY DATA SHEET

CONTENTS

This product contains Rabbit immunoglobulin G (IgG) protein in Tris-citrate/phosphate buffer, pH 7 to 8 containing 0.1% Sodium Azide.

INGREDIENT DESCRIPTIONS

HAZARDOUS:

Sodium Azide (NaN_3): Azide forms explosive chemical compounds with lead and copper plumbing. Care must be taken to wash waste down drains with large volumes of water. LD50 oral mouse 27 mg/kg. Wash all affected areas with large volumes of water and if swallowed consult your physician immediately.

Phospho XRCC1 (S485/T488) Antibody

Rabbit Polyclonal

Antigen Affinity Purified

Catalog No. A300-231A

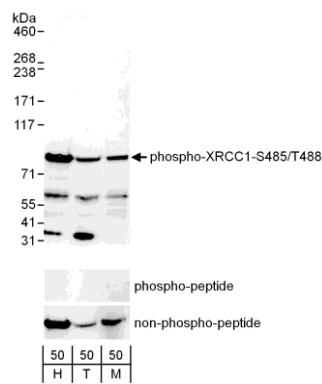
Protein ID P18887

Gene ID 7515

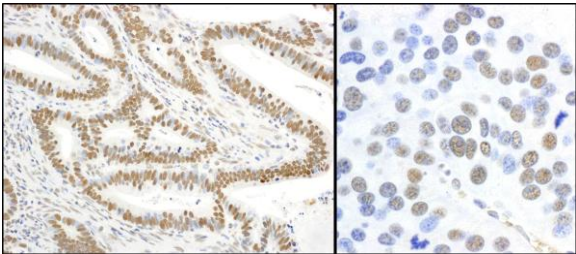


APPLICATIONS	WB, IHC-P, IF						
REACTIVITY TESTED	Human, Mouse						
PRESUMED REACTIVITY	Based on 100% sequence identity, this antibody is predicted to react with Rat, Bovine, Dog, Pig, Panda, Orangutan, Rhesus Monkey, Gorilla, Chimpanzee, White-tufted-ear marmoset, Crab-eating macaque, Chinese hamster, Thirteen-lined ground squirrel and Northern white-cheeked gibbon.						
ISOTYPE	IgG						
AMOUNT	0.1 ml at 1 mg/ml						
STORAGE/SHELF LIFE	2 - 8° C / 1 year from date of receipt						
PHYSICAL STATE	Liquid						
BUFFER	Tris-citrate/phosphate buffer, pH 7 to 8 containing 0.1% Sodium Azide						
ORIGIN	USA						
PRODUCTION PROCEDURES	<p>Antibody was affinity purified using an epitope specific to phosphorylation at Ser 485 and Thr 488 of XRCC1 immobilized on solid support.</p> <p>The epitope recognized by A300-231A maps to a region of surrounding residues Ser 485 and Thr 488 of human X-ray Repair Complementing protein 1 using the numbering given in SwissProt entry P18887 (GeneID 7515).</p> <p>Immunoglobulin concentration was determined by extinction coefficient: absorbance at 280 nm of 1.4 equals 1.0 mg of IgG.</p>						
APPLICATIONS	<p>Centrifuge tube to remove product from lid. Optimal working dilutions should be determined experimentally by the investigator. Prepare working dilution immediately before use.</p> <table><tr><td>Western Blot</td><td>1:1,000 - 1:5,000</td></tr><tr><td>Immunohistochemistry</td><td>1:2,000 to 1:10,000. Epitope retrieval with citrate buffer pH6.0 is recommended for FFPE tissue sections.</td></tr><tr><td>Immunofluorescence</td><td>1:1,000 to 1:5,000</td></tr></table>	Western Blot	1:1,000 - 1:5,000	Immunohistochemistry	1:2,000 to 1:10,000. Epitope retrieval with citrate buffer pH6.0 is recommended for FFPE tissue sections.	Immunofluorescence	1:1,000 to 1:5,000
Western Blot	1:1,000 - 1:5,000						
Immunohistochemistry	1:2,000 to 1:10,000. Epitope retrieval with citrate buffer pH6.0 is recommended for FFPE tissue sections.						
Immunofluorescence	1:1,000 to 1:5,000						
APPLICATION NOTES	<p>Validation by IP/Western Blot was performed using ReliaBLOT® Western Blot Gel 4-8%, 10 x 10 cm (Cat. No. WB101-40812G). Related products include ReliaBLOT® IP/WB kits, buffers and reagents.</p> <p>IHC validation was performed using Immunohistochemistry Accessory Kit (Cat. # IHC-101).</p>						
IHC HUMAN CONTROLS	Breast Carcinoma, Ovarian Carcinoma, Prostate Carcinoma, Stomach Adenocarcinoma						
IHC MOUSE CONTROLS	Renal Cell Carcinoma						
ADDITIONAL INFO	<p>http://www.bethyl.com/product/A300-231A</p> <p>Use the link above to view a current list of citations and other product specific information.</p>						

Phospho XRCC1 (S485/T488) Antibody: A300-231A



Detection of Human and Mouse Phospho-XRCC1-S485/T488 by Western Blot. *Samples:* Whole cell lysate (50 µg) from asynchronously growing HeLa (H), 293T (T) and mouse NIH-3T3 (M) cells. *Antibodies:* Affinity purified rabbit anti-Phospho-XRCC1-S485/T488 antibody A300-231A (lot A300-231A-2) used for WB at 0.1 µg/ml. The binding of the antibody was blocked by pre-incubation with the phospho-peptide but was not blocked by pre-incubation with the non-phosphorylated peptide. *Detection:* Chemiluminescence with an exposure time of 30 seconds.



Detection of Human and Mouse Phospho-XRCC1-S485/T488 by Immunohistochemistry. *Sample:* FFPE sections of human stomach carcinoma (left) and mouse renal cell carcinoma (right). *Antibody:* Affinity purified rabbit anti-Phospho-XRCC1-S485/T488 (Cat. No. A300-231A Lot2) used at a dilution of 1:5,000 (0.2µg/ml). *Detection:* DAB

MATERIAL SAFETY DATA SHEET

CONTENTS

This product contains Rabbit immunoglobulin G (IgG) protein in Tris-citrate/phosphate buffer, pH 7 to 8 containing 0.1% Sodium Azide.

INGREDIENT DESCRIPTIONS

HAZARDOUS:

Sodium Azide (NaN₃): Azide forms explosive chemical compounds with lead and copper plumbing. Care must be taken to wash waste down drains with large volumes of water. LD50 oral mouse 27 mg/kg. Wash all affected areas with large volumes of water and if swallowed consult your physician immediately.