

SMC2 Antibody AbVantage™ Pack

Produced in Rabbit

Antigen Affinity Purified

Catalog No. A310-014A

Protein ID NP_006435.1

Gene ID 10592



CONTENTS	Rabbit anti-SMC2	A300-056A
	Rabbit anti-SMC2	A300-057A
	Rabbit anti-SMC2	A300-058A

APPLICATIONS	WB, ICC, IF, PLA
---------------------	------------------

REACTIVITY	Human
-------------------	-------

STORAGE / SHELF LIFE	2 - 8° C / 1 year from date of receipt
-----------------------------	--

PHYSICAL STATE	Liquid
-----------------------	--------

ORIGIN	USA
---------------	-----

NOTE	Centrifuge tube to remove product from lid. Optimal working dilutions should be determined experimentally by the investigator. Prepare working dilution immediately before use.
-------------	---

SMC2 Antibody

Rabbit Polyclonal

Antigen Affinity Purified

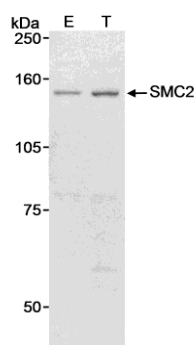
Catalog No. A300-056A

Protein ID NP_006435.1

Gene ID 10592



APPLICATIONS	WB
REACTIVITY TESTED	Human
PRESUMED REACTIVITY	Based on 100% sequence identity, this antibody is predicted to react with Bovine, Dog, Horse, Rabbit, Guinea pig_10141, Pig, Panda, Orangutan, Rhesus Monkey, Gorilla, Chimpanzee, White-tufted-ear marmoset, Crab-eating macaque, European domestic ferret, African elephant and Northern white-cheeked gibbon.
ISOTYPE	IgG
AMOUNT	0.1 ml at 1 mg/ml
STORAGE/SHELF LIFE	2 - 8° C / 1 year from date of receipt
PHYSICAL STATE	Liquid
BUFFER	Tris-citrate/phosphate buffer, pH 7 to 8 containing 0.1% Sodium Azide
ORIGIN	USA
PRODUCTION PROCEDURES	<p>Antibody was affinity purified using an epitope specific to SMC2 immobilized on solid support.</p> <p>The epitope recognized by A300-056A maps to a region between residues 50 and 100 of human Structural Maintenance of Chromosomes 2 using the numbering given in entry NP_006435.1 (GeneID 10592).</p> <p>Immunoglobulin concentration was determined by extinction coefficient: absorbance at 280 nm of 1.4 equals 1.0 mg of IgG.</p>
APPLICATIONS	<p>Centrifuge tube to remove product from lid. Optimal working dilutions should be determined experimentally by the investigator. Prepare working dilution immediately before use.</p> <p>Western Blot 1:5,000 - 1:20,000</p>
ADDITIONAL INFO	<p>http://www.bethyl.com/product/A300-056A</p> <p>Use the link above to view a current list of citations and other product specific information.</p>



Detection of Human SMC2 by Western Blot. *Samples:* Whole cell lysate (90 µg) from mock transfected (E) or SMC2 transfected (T) HEK293T cells. *Antibody:* Affinity purified rabbit anti-SMC2 A300-056A used at 0.1 µg/ml. *Detection:* Chemiluminescence with a 10 minute exposure.

MATERIAL SAFETY DATA SHEET

CONTENTS

This product contains Rabbit immunoglobulin G (IgG) protein in Tris-citrate/phosphate buffer, pH 7 to 8 containing 0.1% Sodium Azide.

INGREDIENT DESCRIPTIONS

HAZARDOUS:

Sodium Azide (NaN_3): Azide forms explosive chemical compounds with lead and copper plumbing. Care must be taken to wash waste down drains with large volumes of water. LD50 oral mouse 27 mg/kg. Wash all affected areas with large volumes of water and if swallowed consult your physician immediately.

SMC2 Antibody

Rabbit Polyclonal

Antigen Affinity Purified

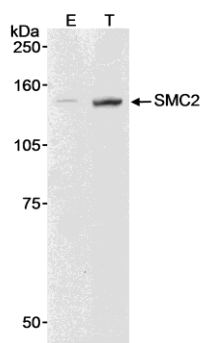
Catalog No. A300-057A

Protein ID NP_006435.1

Gene ID 10592



APPLICATIONS	WB
REACTIVITY TESTED	Human
PRESUMED REACTIVITY	Based on 100% sequence identity, this antibody is predicted to react with Mouse, Rat, Dog, Horse, Panda, Orangutan, Rhesus Monkey, Gorilla, Chimpanzee, White-tufted-ear marmoset, Crab-eating macaque, European domestic ferret, African elephant and Northern white-cheeked gibbon.
ISOTYPE	IgG
AMOUNT	0.1 ml at 1 mg/ml
STORAGE/SHELF LIFE	2 - 8° C / 1 year from date of receipt
PHYSICAL STATE	Liquid
BUFFER	Tris-citrate/phosphate buffer, pH 7 to 8 containing 0.1% Sodium Azide
ORIGIN	USA
PRODUCTION PROCEDURES	<p>Antibody was affinity purified using an epitope specific to SMC2 immobilized on solid support.</p> <p>The epitope recognized by A300-057A maps to a region between residues 950 and 1000 of human Structural Maintenance of Chromosomes 2 using the numbering given in entry NP_006435.1 (GeneID 10592).</p> <p>Immunoglobulin concentration was determined by extinction coefficient: absorbance at 280 nm of 1.4 equals 1.0 mg of IgG.</p>
APPLICATIONS	<p>Centrifuge tube to remove product from lid. Optimal working dilutions should be determined experimentally by the investigator. Prepare working dilution immediately before use.</p> <p>Western Blot 1:1,000 - 1:10,000</p>
ADDITIONAL INFO	<p>http://www.bethyl.com/product/A300-057A</p> <p>Use the link above to view a current list of citations and other product specific information.</p>



Detection of Human SMC2 by Western Blot. *Samples:* Whole cell lysate (90 µg) from mock transfected (E) or SMC2 transfected (T) HEK293T cells. *Antibody:* Affinity purified rabbit anti-SMC2 A300-057A used at 0.1 µg/ml. *Detection:* Chemiluminescence with a 10 minute exposure.

MATERIAL SAFETY DATA SHEET

CONTENTS

This product contains Rabbit immunoglobulin G (IgG) protein in Tris-citrate/phosphate buffer, pH 7 to 8 containing 0.1% Sodium Azide.

INGREDIENT DESCRIPTIONS

HAZARDOUS:

Sodium Azide (NaN₃): Azide forms explosive chemical compounds with lead and copper plumbing. Care must be taken to wash waste down drains with large volumes of water. LD₅₀ oral mouse 27 mg/kg. Wash all affected areas with large volumes of water and if swallowed consult your physician immediately.

SMC2 Antibody

Rabbit Polyclonal

Antigen Affinity Purified

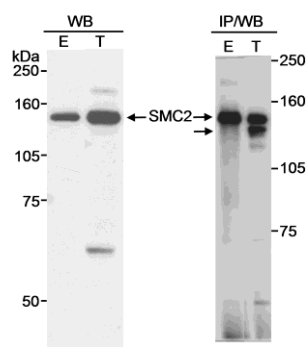
Catalog No. A300-058A

Protein ID NP_006435.1

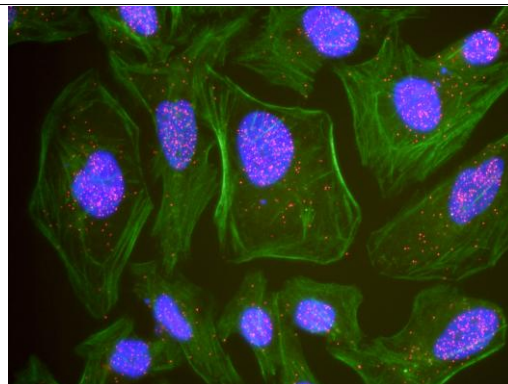
Gene ID 10592



APPLICATIONS	WB, IP, ICC, IF, PLA										
REACTIVITY TESTED	Human										
PRESUMED REACTIVITY	Based on 100% sequence identity, this antibody is predicted to react with Orangutan, Rhesus Monkey, Gorilla, Chimpanzee, Crab-eating macaque and Northern white-cheeked gibbon.										
ISOTYPE	IgG										
AMOUNT	0.1 ml at 1 mg/ml										
STORAGE/SHELF LIFE	2 - 8° C / 1 year from date of receipt										
PHYSICAL STATE	Liquid										
BUFFER	Tris-citrate/phosphate buffer, pH 7 to 8 containing 0.1% Sodium Azide										
ORIGIN	USA										
PRODUCTION PROCEDURES	<p>Antibody was affinity purified using an epitope specific to SMC2 immobilized on solid support.</p> <p>The epitope recognized by A300-058A maps to a region between residue 1150 and the C-terminus (residue 1197) of human Structural Maintenance of Chromosomes 2 using the numbering given in entry NP_006435.1 (GeneID 10592).</p> <p>Immunoglobulin concentration was determined by extinction coefficient: absorbance at 280 nm of 1.4 equals 1.0 mg of IgG.</p>										
APPLICATIONS	<p>Centrifuge tube to remove product from lid. Optimal working dilutions should be determined experimentally by the investigator. Prepare working dilution immediately before use.</p> <table><tr><td>Western Blot</td><td>1:5,000 - 1:20,000</td></tr><tr><td>Immunoprecipitation</td><td>2 to 10 µg/mg lysate</td></tr><tr><td>Immunocytochemistry</td><td>1:200 to 1:400</td></tr><tr><td>Immunofluorescence</td><td>1:200 to 1:400</td></tr><tr><td>Proximity Ligation Assay</td><td>1:1,000 - 1:20,000</td></tr></table>	Western Blot	1:5,000 - 1:20,000	Immunoprecipitation	2 to 10 µg/mg lysate	Immunocytochemistry	1:200 to 1:400	Immunofluorescence	1:200 to 1:400	Proximity Ligation Assay	1:1,000 - 1:20,000
Western Blot	1:5,000 - 1:20,000										
Immunoprecipitation	2 to 10 µg/mg lysate										
Immunocytochemistry	1:200 to 1:400										
Immunofluorescence	1:200 to 1:400										
Proximity Ligation Assay	1:1,000 - 1:20,000										
APPLICATION NOTES	PLA validation was performed using Duolink In Situ kits, buffers and reagents (Cat # OLK-*).										
ADDITIONAL INFO	<p>http://www.bethyl.com/product/A300-058A</p> <p>Use the link above to view a current list of citations and other product specific information.</p>										



Detection of Human SMC2 by Western Blot and Immunoprecipitation. *Samples:* Whole cell lysate (90 µg for WB; 0.5 mg for IP) from HEK293T cells that were mock transfected (E), transfected with full length SMC2 (T for WB), or transfected with truncated SMC2 (T for IP). *Antibody:* Affinity purified rabbit anti-SMC2 A300-058A used at 0.1 µg/ml for WB and at 5 µg for IP. *Detection:* Chemiluminescence.



This antibody is qualified for the Proximity Ligation Assay (PLA). PLA uses paired antibodies, so please refer to the PLA page of our website for specific imaging obtained by pairing this antibody with other qualified antibodies. The above image shows representative results for PLA using three color fluorescence, including DAPI stained nuclei (blue), phalloidin stained cytoplasmic F-actin (green), and PLA positive signal (red).

MATERIAL SAFETY DATA SHEET

CONTENTS

This product contains Rabbit immunoglobulin G (IgG) protein in Tris-citrate/phosphate buffer, pH 7 to 8 containing 0.1% Sodium Azide.

INGREDIENT DESCRIPTIONS

HAZARDOUS:

Sodium Azide (NaN_3): Azide forms explosive chemical compounds with lead and copper plumbing. Care must be taken to wash waste down drains with large volumes of water. LD50 oral mouse 27 mg/kg. Wash all affected areas with large volumes of water and if swallowed consult your physician immediately.