

CD3D Antibody

Rabbit Polyclonal

Antigen Affinity Purified

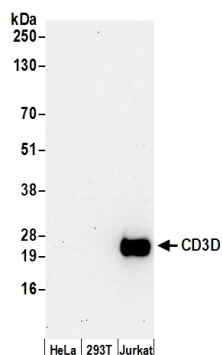
Catalog No. A305-169A-T

Protein ID P04234.1

Gene ID 915



APPLICATIONS	WB, IP
REACTIVITY TESTED	Human
AMOUNT	20 µl (2 blots)
STORAGE/SHELF LIFE	2 - 8° C / 1 year from date of receipt
PHYSICAL STATE	Liquid
BUFFER	Tris-buffered Saline with 0.1% BSA containing 0.09% Sodium Azide
ORIGIN	USA
PRODUCTION PROCEDURES	Antibody was affinity purified using an epitope specific to CD3D immobilized on solid support. The epitope recognized by A305-169A-T maps to a region between residue 121 to 171 of human T-cell surface glycoprotein CD3 delta chain using the numbering given in entry P04234.1 (GeneID 915).
APPLICATIONS	Centrifuge tube to remove product from lid. Optimal working dilutions should be determined experimentally by the investigator. Prepare working dilution immediately before use. Western Blot 1:1000 Immunoprecipitation The antibody contained within A305-169A-T has been qualified for use in immunoprecipitation; however, we recommend using the alternative formulation of this antibody found as product A305-169A.
APPLICATION NOTES	Validation by IP/Western Blot was performed using a 4-12% Bis-Tris gel and ReliaBLOT® Reagents (Cat. No. WB120).
ADDITIONAL INFO	http://www.bethyl.com/product/A305-169A-T Use the link above to view SDS, a current list of citations, and other product specific information.



Detection of Human CD3D by Western Blot. *Samples:* Whole cell lysate (50 µg) from HeLa, 293T, and Jurkat cells prepared using NETN lysis buffer. *Antibody:* Affinity purified rabbit anti-CD3D antibody A305-169A-T (lot A305-169A-T-1) used for WB at 1:1000. *Detection:* Chemiluminescence with an exposure time of 30 seconds.