

CBS Antibody

Rabbit Polyclonal

Antigen Affinity Purified

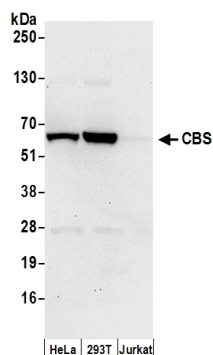
Catalog No. A304-780A-T

Protein ID P35520.2

Gene ID 875



APPLICATIONS	WB, IP
REACTIVITY TESTED	Human
PRESUMED REACTIVITY	Based on 100% sequence identity, this antibody is predicted to react with Orangutan, Rhesus Monkey, Gorilla, Chimpanzee, White-tufted-ear marmoset and Crab-eating macaque.
AMOUNT	20 µl (2 blots)
STORAGE/SHELF LIFE	2 - 8° C / 1 year from date of receipt
PHYSICAL STATE	Liquid
BUFFER	Tris-buffered Saline with 0.1% BSA containing 0.09% Sodium Azide
ORIGIN	USA
PRODUCTION PROCEDURES	Antibody was affinity purified using an epitope specific to CBS immobilized on solid support. The epitope recognized by A304-780A-T maps to a region between residue 1 to 50 of human Cystathionine beta-synthase using the numbering given in entry P35520.2 (GeneID 875).
APPLICATIONS	Centrifuge tube to remove product from lid. Optimal working dilutions should be determined experimentally by the investigator. Prepare working dilution immediately before use. Western Blot 1:1000 Immunoprecipitation The antibody contained within A304-780A-T has been qualified for use in immunoprecipitation; however, we recommend using the alternative formulation of this antibody found as product A304-780A.
APPLICATION NOTES	Validation by IP/Western Blot was performed using a 4-20% SDS-PAGE gel and ReliaBLOT® Reagents (Cat. No. WB120).
ADDITIONAL INFO	http://www.bethyl.com/product/A304-780A-T Use the link above to view SDS, a current list of citations, and other product specific information.



Detection of Human CBS by Western Blot. *Samples:* Whole cell lysate (50 µg) from HeLa, 293T, and Jurkat cells prepared using NETN lysis buffer. *Antibody:* Affinity purified rabbit anti-CBS antibody A304-780A-T (lot A304-780A-T-1) used for WB at 1:1000. *Detection:* Chemiluminescence with an exposure time of 30 seconds.