

# VPS35 Antibody

Rabbit Polyclonal

Antigen Affinity Purified

Catalog No. A304-727A-T

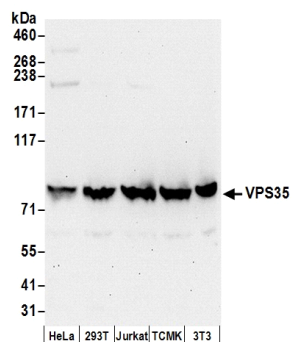
Protein ID NP\_060676.2

Gene ID 55737



|                              |   |
|------------------------------|---|
| <b>APPLICATIONS</b>          | WB, IP  |
| <b>REACTIVITY TESTED</b>     | Human, Mouse  |
| <b>PRESUMED REACTIVITY</b>   | Based on 100% sequence identity, this antibody is predicted to react with Sheep, Bovine, Horse, Rabbit, Pig, Panda, Orangutan, Rhesus Monkey, Gorilla, Chimpanzee, Cetartiodactyla, White-tufted-ear marmoset, Cat, African elephant, Crab-eating macaque, European domestic ferret and Chinese tree shrew.   |
| <b>ISOTYPE</b>               | IgG   |
| <b>AMOUNT</b>                | 20 µl (2 blots)   |
| <b>STORAGE/SHELF LIFE</b>    | 2 - 8° C / 1 year from date of receipt  |
| <b>PHYSICAL STATE</b>        | Liquid  |
| <b>BUFFER</b>                | Tris-buffered Saline with 0.1% BSA containing 0.09% Sodium Azide  |
| <b>ORIGIN</b>                | USA   |
| <b>PRODUCTION PROCEDURES</b> | Antibody was affinity purified using an epitope specific to VPS35 immobilized on solid support.<br><br>The epitope recognized by A304-727A-T maps to a region between residue 746 to 796 of human Vacuolar Protein Sorting 35 Homolog using the numbering given in entry NP_060676.2 (GeneID 55737).  |
| <b>APPLICATIONS</b>          | Centrifuge tube to remove product from lid. Optimal working dilutions should be determined experimentally by the investigator. Prepare working dilution immediately before use.<br><br>Western Blot 1:1000<br><br>Immunoprecipitation The antibody contained within A304-727A-T has been qualified for use in immunoprecipitation; however, we recommend using the alternative formulation of this antibody found as product A304-727A. |
| <b>APPLICATION NOTES</b>     | Validation by IP/Western Blot was performed using a 4-8% SDS-PAGE gel and ReliaBLOT® Reagents (Cat. No. WB120).   |
| <b>ADDITIONAL INFO</b>       | <a href="http://www.bethyl.com/product/A304-727A-T">http://www.bethyl.com/product/A304-727A-T</a><br><br>Use the link above to view SDS, a current list of citations, and other product specific information.   |

## VPS35 Antibody: A304-727A-T



### Detection of Human and Mouse VPS35 by Western Blot.

**Samples:** Whole cell lysate (50 µg) from HeLa, 293T, Jurkat, mouse TCMK-1, and mouse NIH3T3 cells prepared using NETN lysis buffer. **Antibody:** Affinity purified rabbit anti-VPS35 antibody A304-727A-T (lot A304-727A-T-1) used for WB at 1:1000. **Detection:** Chemiluminescence with an exposure time of 30 seconds.