

# Alpha-adaptin Antibody

Rabbit Polyclonal

Antigen Affinity Purified

Protein ID NP\_055018.2

Catalog No. A304-721A-T

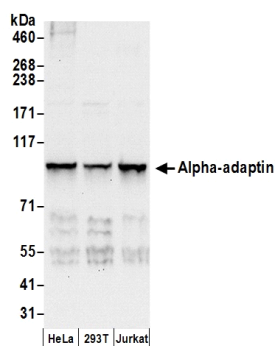
Gene ID 160



<b>APPLICATIONS</b>	WB, IP
<b>REACTIVITY TESTED</b>	Human
<b>PRESUMED REACTIVITY</b>	Based on 100% sequence identity, this antibody is predicted to react with Horse, Panda, Rhesus Monkey, Chimpanzee, White-tufted-ear marmoset, Vampire bat, Crab-eating macaque, European domestic ferret, Northern white-cheeked gibbon, Small-eared galago and Chinese tree shrew.
<b>ISOTYPE</b>	IgG
<b>AMOUNT</b>	20 µl (2 blots)
<b>STORAGE/SHELF LIFE</b>	2 - 8° C / 1 year from date of receipt
<b>PHYSICAL STATE</b>	Liquid
<b>BUFFER</b>	Tris-buffered Saline with 0.1% BSA containing 0.09% Sodium Azide
<b>ORIGIN</b>	USA
<b>PRODUCTION PROCEDURES</b>	Antibody was affinity purified using an epitope specific to Alpha-adaptin immobilized on solid support.  The epitope recognized by A304-721A-T maps to a region between residue 600 to 650 of human Adaptor-Related Protein Complex 2, Alpha 1 Subunit using the numbering given in entry NP_055018.2 (GeneID 160).
<b>APPLICATIONS</b>	Centrifuge tube to remove product from lid. Optimal working dilutions should be determined experimentally by the investigator. Prepare working dilution immediately before use.  Western Blot 1:1000  Immunoprecipitation The antibody contained within A304-721A-T has been qualified for use in immunoprecipitation; however, we recommend using the alternative formulation of this antibody found as product A304-721A.
<b>APPLICATION NOTES</b>	Validation by IP/Western Blot was performed using a 4-8% SDS-PAGE gel and ReliaBLOT® Reagents (Cat. No. WB120).
<b>ADDITIONAL INFO</b>	<a href="http://www.bethyl.com/product/A304-721A-T">http://www.bethyl.com/product/A304-721A-T</a>  Use the link above to view SDS, a current list of citations, and other product specific information.

## Alpha-adaptin Antibody: A304-721A-T

---



**Detection of Human Alpha-adaptin by Western Blot.** *Samples:* Whole cell lysate (50  $\mu$ g) from HeLa, 293T, and Jurkat cells prepared using NETN lysis buffer. *Antibody:* Affinity purified rabbit anti-Alpha-adaptin antibody A304-721A-T (lot A304-721A-T-1) used for WB at 1:1000. *Detection:* Chemiluminescence with an exposure time of 10 seconds.