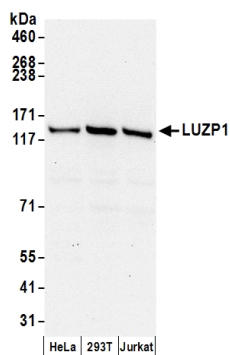




## LUZP1 Antibody: A304-634A-T

---



**Detection of Human LUZP1 by Western Blot.** *Samples:* Whole cell lysate (50  $\mu$ g) from HeLa, 293T, and Jurkat cells prepared using NETN lysis buffer. *Antibody:* Affinity purified rabbit anti-LUZP1 antibody A304-634A-T used at 1:1000. *Detection:* Chemiluminescence with an exposure time of 30 seconds.