

CD43 Antibody

Rabbit Polyclonal

Antigen Affinity Purified

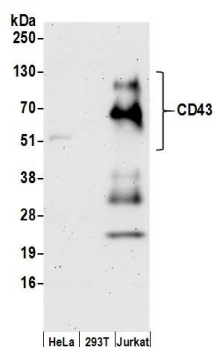
Catalog No. A304-393A-T

Protein ID NP_001025459.1

GeneID 6693



APPLICATIONS	WB, IP, IHC-P						
SPECIES REACTIVITY	Human						
ISOTYPE	IgG						
AMOUNT	20 µl (2 blots)						
STORAGE/SHELF LIFE	2 - 8° C / 1 year from date of receipt						
PHYSICAL STATE	Liquid						
BUFFER	Tris-buffered Saline containing 0.1% BSA and 0.09% Sodium Azide						
ORIGIN	USA						
PRODUCTION PROCEDURES	Antibody was affinity purified using an epitope specific to CD43 immobilized on solid support. The epitope recognized by A304-393A-T maps to a region between residue 350 to 400 of human CD43 Molecule using the numbering given in entry NP_001025459.1 (GeneID 6693). Centrifuge tube to remove product from lid. Optimal working dilutions should be determined experimentally by the investigator. Prepare working dilution immediately before use.						
APPLICATIONS	<table><tr><td>Western Blot</td><td>1:1000</td></tr><tr><td>Immunoprecipitation</td><td>The antibody contained within A304-393A-T has been qualified for use in immunoprecipitation; however, we recommend using the alternative formulation of this antibody found as product A304-393A.</td></tr><tr><td>Immunohistochemistry</td><td>1:50 to 1:200. Epitope retrieval with citrate buffer pH6.0 is recommended for FFPE tissue sections.</td></tr></table>	Western Blot	1:1000	Immunoprecipitation	The antibody contained within A304-393A-T has been qualified for use in immunoprecipitation; however, we recommend using the alternative formulation of this antibody found as product A304-393A.	Immunohistochemistry	1:50 to 1:200. Epitope retrieval with citrate buffer pH6.0 is recommended for FFPE tissue sections.
Western Blot	1:1000						
Immunoprecipitation	The antibody contained within A304-393A-T has been qualified for use in immunoprecipitation; however, we recommend using the alternative formulation of this antibody found as product A304-393A.						
Immunohistochemistry	1:50 to 1:200. Epitope retrieval with citrate buffer pH6.0 is recommended for FFPE tissue sections.						
APPLICATION NOTES	Western blot of immunoprecipitates performed using ReliaBLOT® Reagents (Cat. No. WB120) and 4-20% SDS-PAGE. Western blot of lysates performed using standard western blot reagents and 4-20% SDS-PAGE.						
ADDITIONAL INFO	http://www.bethyl.com/product/A304-393A-T Use the link above to view SDS, a current list of citations, and other product specific information.						



Detection of Human CD43 by Western Blot. *Samples:* Whole cell lysate (50 µg) prepared using RIPA buffer from HeLa, 293T, and Jurkat cells. *Antibody:* Affinity purified rabbit anti-CD43 antibody A304-393A-T used at 1:1000. *Detection:* Chemiluminescence with an exposure time of 3 minutes.