

CD27 Antibody

Rabbit Polyclonal

Antigen Affinity Purified

Catalog No. A304-380A-T

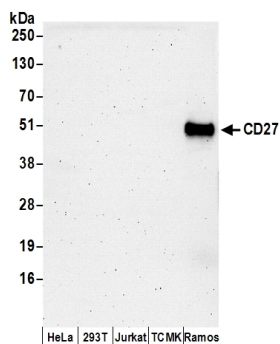
Protein ID NP_001233.1

Gene ID 939



APPLICATIONS	WB
REACTIVITY TESTED	Human
PRESUMED REACTIVITY	Based on 100% sequence identity, this antibody is predicted to react with Orangutan, Rhesus Monkey, Gorilla, Chimpanzee, Cetartiodactyla, African elephant and Thirteen-lined ground squirrel.
AMOUNT	20 µl (2 blots)
STORAGE/SHELF LIFE	2 - 8° C / 1 year from date of receipt
PHYSICAL STATE	Liquid
BUFFER	Tris-buffered Saline with 0.1% BSA containing 0.09% Sodium Azide
ORIGIN	USA
PRODUCTION PROCEDURES	Antibody was affinity purified using an epitope specific to CD27 immobilized on solid support. The epitope recognized by A304-380A-T maps to a region between residue 50 to 100 of human CD27 Molecule using the numbering given in entry NP_001233.1 (GeneID 939).
APPLICATIONS	Centrifuge tube to remove product from lid. Optimal working dilutions should be determined experimentally by the investigator. Prepare working dilution immediately before use. Western Blot 1:1000 Immunoprecipitation Not Recommended
APPLICATION NOTES	Validation by IP/Western Blot was performed using a 4-20% SDS-PAGE gel and ReliaBLOT® Reagents (Cat. No. WB120).
ADDITIONAL INFO	http://www.bethyl.com/product/A304-380A-T Use the link above to view SDS, a current list of citations, and other product specific information.

CD27 Antibody: A304-380A-T



Detection of Human CD27 by Western Blot. *Samples:* Whole cell lysate (50 μ g) prepared using NETN buffer from HeLa, 293T, Jurkat, mouse TCMK-1, and Ramos cells. *Antibody:* Affinity purified rabbit anti-CD27 antibody A304-380A-T used at 1:1000. *Detection:* Chemiluminescence with an exposure time of 3 minutes.