

CD276 Antibody

Rabbit Polyclonal

Antigen Affinity Purified

Catalog No. A304-367A-T

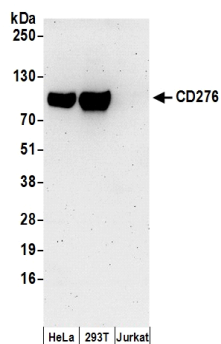
Protein ID NP_001019907.1

Gene ID 80381



| | |
|------------------------------|--|
| APPLICATIONS | WB |
| REACTIVITY TESTED | Human |
| PRESUMED REACTIVITY | Based on 100% sequence identity, this antibody is predicted to react with Bovine, Horse, Rabbit, Pig, Panda, Orangutan, Rhesus Monkey, Gorilla, Cetartiodactyla, White-tufted-ear marmoset, Vampire bat, African elephant and Black flying fox. |
| AMOUNT | 20 µl (2 blots) |
| STORAGE/SHELF LIFE | 2 - 8° C / 1 year from date of receipt |
| PHYSICAL STATE | Liquid |
| BUFFER | Tris-buffered Saline with 0.1% BSA containing 0.09% Sodium Azide |
| ORIGIN | USA |
| PRODUCTION PROCEDURES | Antibody was affinity purified using an epitope specific to CD276 immobilized on solid support. The epitope recognized by A304-367A-T maps to a region between residue 350 to 400 of human CD276 Molecule using the numbering given in entry NP_001019907.1 (GeneID 80381). |
| APPLICATIONS | Centrifuge tube to remove product from lid. Optimal working dilutions should be determined experimentally by the investigator. Prepare working dilution immediately before use. Western Blot 1:1000 Immunoprecipitation Not Recommended |
| APPLICATION NOTES | Validation by IP/Western Blot was performed using a 4-20% SDS-PAGE gel and ReliaBLOT® Reagents (Cat. No. WB120). |
| ADDITIONAL INFO | http://www.bethyl.com/product/A304-367A-T Use the link above to view SDS, a current list of citations, and other product specific information. |

CD276 Antibody: A304-367A-T



Detection of Human CD276 by Western Blot. *Samples:* Whole cell lysate (50 µg) prepared using NETN buffer from HeLa, 293T, and Jurkat cells. *Antibody:* Affinity purified rabbit anti-CD276 antibody A304-367A-T used at 1:1000. *Detection:* Chemiluminescence with an exposure time of 3 minutes.