

# Gamma-Taxilin Antibody

Rabbit Polyclonal

Antigen Affinity Purified

Catalog No. A304-042A-T

Protein ID NP\_060830.2

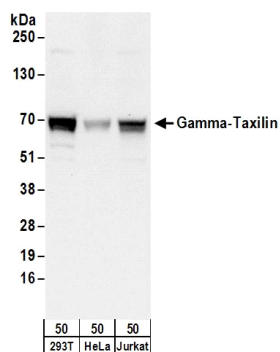
Gene ID 55787



<b>APPLICATIONS</b>	WB, IP
<b>REACTIVITY TESTED</b>	Human
<b>PRESUMED REACTIVITY</b>	Based on 100% sequence identity, this antibody is predicted to react with Orangutan, Gorilla, Chimpanzee, White-tufted-ear marmoset and Northern white-cheeked gibbon.
<b>AMOUNT</b>	20 µl (2 blots)
<b>STORAGE/SHELF LIFE</b>	2 - 8° C / 1 year from date of receipt
<b>PHYSICAL STATE</b>	Liquid
<b>BUFFER</b>	Tris-buffered Saline with 0.1% BSA containing 0.09% Sodium Azide
<b>ORIGIN</b>	USA
<b>PRODUCTION PROCEDURES</b>	Antibody was affinity purified using an epitope specific to Gamma-Taxilin immobilized on solid support.  The epitope recognized by A304-042A-T maps to a region between residue 475 to 525 of human Taxilin Gamma using the numbering given in entry NP_060830.2 (GeneID 55787). The epitopes for anti-ABT1 antibodies A304-044A and A304-045A are in close proximity, but do not overlap.
<b>APPLICATIONS</b>	Centrifuge tube to remove product from lid. Optimal working dilutions should be determined experimentally by the investigator. Prepare working dilution immediately before use.  Western Blot 1:1000  Immunoprecipitation The antibody contained within A304-042A-T has been qualified for use in immunoprecipitation; however, we recommend using the alternative formulation of this antibody found as product A304-042A.
<b>APPLICATION NOTES</b>	Validation by IP/Western Blot was performed using a 4-8% SDS-PAGE gel and ReliaBLOT® Reagents (Cat. No. WB120).
<b>ADDITIONAL INFO</b>	<a href="http://www.bethyl.com/product/A304-042A-T">http://www.bethyl.com/product/A304-042A-T</a>  Use the link above to view SDS, a current list of citations, and other product specific information.

## Gamma-Taxilin Antibody: A304-042A-T

---



**Detection of Human Gamma-Taxilin by Western Blot.**

*Samples:* Whole cell lysate (50  $\mu$ g) from 293T, HeLa, and Jurkat cells. *Antibody:* Affinity purified rabbit anti-Gamma-Taxilin antibody A304-042A-T used at 1:1000. *Detection:* Chemiluminescence with an exposure time of 10 seconds.