

Lamin-A/C Antibody

Rabbit Polyclonal

Antigen Affinity Purified

Catalog No. A303-430A-T

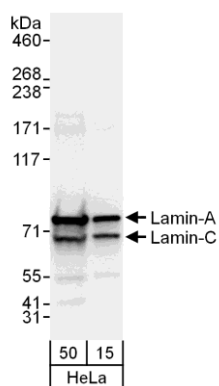
Protein ID NP_733821.1

Gene ID 4000



APPLICATIONS	WB, IP, IHC-P, ICC, IF
REACTIVITY TESTED	Human, Mouse.
PRESUMED REACTIVITY	Based on 100% sequence identity, this antibody is predicted to react with Rat, Bovine, Dog, Horse, Rabbit, Pig, Orangutan, Rhesus Monkey, Gorilla, Chimpanzee, White-tufted-ear marmoset, Crab-eating macaque, European domestic ferret, African elephant and Northern white-cheeked gibbon.
ISOTYPE	IgG
AMOUNT	20 µl (2 blots)
STORAGE/SHELF LIFE	2 - 8° C / 1 year from date of receipt
PHYSICAL STATE	Liquid
BUFFER	Tris-buffered Saline with 0.1% BSA containing 0.09% Sodium Azide
ORIGIN	USA
PRODUCTION PROCEDURES	Antibody was affinity purified using an epitope specific to Lamin-A/C immobilized on solid support. The epitope recognized by A303-430A-T maps to a region between residue 1 and 50 of human Lamin A/Lamin C using the numbering given in entry NP_733821.1 (GeneID 4000).
APPLICATIONS	Centrifuge tube to remove product from lid. Optimal working dilutions should be determined experimentally by the investigator. Prepare working dilution immediately before use. Western Blot 1:1000 Immunoprecipitation The antibody contained within A303-430A-T has been qualified for use in immunoprecipitation; however, we recommend using the alternative formulation of this antibody found as product A303-430A. Immunohistochemistry 1:40 to 1:200. Epitope retrieval with citrate buffer pH6.0 is recommended for FFPE tissue sections. Immunocytochemistry 1:20 to 1:100. Formaldehyde fixation is recommended. Permeabilization with Triton-X 100 is recommended for formaldehyde-fixed cells. Immunofluorescence 1:20 to 1:100
APPLICATION NOTES	Validation by IP/Western Blot was performed using a 4-8% SDS-PAGE gel and ReliaBLOT® Reagents (Cat. No. WB120).
ADDITIONAL INFO	http://www.bethyl.com/product/A303-430A-T Use the link above to view SDS, a current list of citations, and other product specific information.

Lamin-A/C Antibody: A303-430A-T



Detection of Human Lamin-A and Lamin-C by Western Blot.

Samples: Whole cell lysate (15 and 50 µg) from HeLa cells.

Antibody: Affinity purified rabbit anti-Lamin-A/C antibody

A303-430A-T used at 1:1000. *Detection:* Chemiluminescence

with an exposure time of 1 second.