

MAX Antibody

Rabbit Polyclonal

Antigen Affinity Purified

Catalog No. A302-866A-T

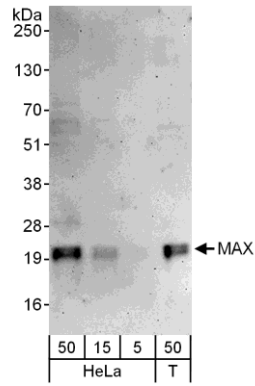
Protein ID NP_002373.3

Gene ID 4149



APPLICATIONS	WB, IP, IHC-P, IF
REACTIVITY TESTED	Human
PRESUMED REACTIVITY	Based on 100% sequence identity, this antibody is predicted to react with Mouse, Chicken, Turkey, Bovine, Dog, Guinea pig_10141, Pig, Panda, Orangutan, Rhesus Monkey, Gorilla, Chimpanzee, Duckbill platypus, Tasmanian devil, White-tufted-ear marmoset, Crab-eating macaque and Northern white-cheeked gibbon.
ISOTYPE	IgG
AMOUNT	20 µl (2 blots)
STORAGE/SHELF LIFE	2 - 8° C / 1 year from date of receipt
PHYSICAL STATE	Liquid
BUFFER	Tris-buffered Saline with 0.1% BSA containing 0.09% Sodium Azide
ORIGIN	USA
PRODUCTION PROCEDURES	Antibody was affinity purified using an epitope specific to MAX immobilized on solid support. The epitope recognized by A302-866A-T maps to a region between residue 110 and 160 of human MYC Associated Factor X using the numbering given in entry NP_002373.3 (GeneID 4149).
APPLICATIONS	Centrifuge tube to remove product from lid. Optimal working dilutions should be determined experimentally by the investigator. Prepare working dilution immediately before use. Western Blot 1:1000 Immunoprecipitation The antibody contained within A302-866A-T has been qualified for use in immunoprecipitation; however, we recommend using the alternative formulation of this antibody found as product A302-866A. Immunohistochemistry 1:50 to 1:200. Epitope retrieval with citrate buffer pH6.0 is recommended for FFPE tissue sections. Immunofluorescence 1:25 to 1:100
APPLICATION NOTES	Validation by IP/Western Blot was performed using a 4-20% SDS-PAGE gel and ReliaBLOT® Reagents (Cat. No. WB120).
ADDITIONAL INFO	http://www.bethyl.com/product/A302-866A-T Use the link above to view SDS, a current list of citations, and other product specific information.

MAX Antibody: A302-866A-T



Detection of Human MAX by Western Blot. *Samples:* Whole cell lysate (5, 15, and 50 µg) from HeLa and 293T (T; 50 µg) cells. *Antibody:* Affinity purified rabbit anti-MAX antibody A302-866A-T used at 1:1000. *Detection:* Chemiluminescence with an exposure time of 3 minutes.