

FAS Antibody

Rabbit Polyclonal

Antigen Affinity Purified

Catalog No. A302-858A-T

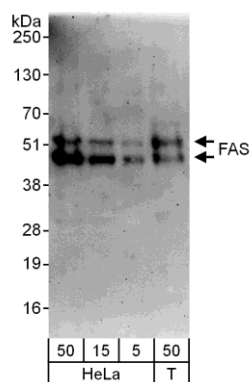
Protein ID NP_000034.1

Gene ID 355



APPLICATIONS	WB, IP
REACTIVITY TESTED	Human
PRESUMED REACTIVITY	Based on 100% sequence identity, this antibody is predicted to react with Chimpanzee and Crab-eating macaque.
ISOTYPE	IgG
AMOUNT	20 µl (2 blots)
STORAGE/SHELF LIFE	2 - 8° C / 1 year from date of receipt
PHYSICAL STATE	Liquid
BUFFER	Tris-buffered Saline with 0.1% BSA containing 0.09% Sodium Azide
ORIGIN	USA
PRODUCTION PROCEDURES	Antibody was affinity purified using an epitope specific to FAS immobilized on solid support. The epitope recognized by A302-858A-T maps to a region between residue 285 and 335 of human Fas (TNF receptor superfamily, member 6) using the numbering given in entry NP_000034.1 (GeneID 355).
APPLICATIONS	Centrifuge tube to remove product from lid. Optimal working dilutions should be determined experimentally by the investigator. Prepare working dilution immediately before use. Western Blot 1:1000 Immunoprecipitation The antibody contained within A302-858A-T has been qualified for use in immunoprecipitation; however, we recommend using the alternative formulation of this antibody found as product A302-858A.
APPLICATION NOTES	Validation by IP/Western Blot was performed using a 4-20% SDS-PAGE gel and ReliaBLOT® Reagents (Cat. No. WB120).
ADDITIONAL INFO	http://www.bethyl.com/product/A302-858A-T Use the link above to view SDS, a current list of citations, and other product specific information.

FAS Antibody: A302-858A-T



Detection of Human Fas by Western Blot. *Samples:* Whole cell lysate from HeLa (5, 15, and 50 μ g) and 293T (T; 50 μ g) cells. *Antibodies:* Affinity purified rabbit anti-Fas antibody A302-858A-T used at 1:1000. *Detection:* Chemiluminescence with an exposure time of 3 minutes.