

Vinculin Antibody

Rabbit Polyclonal

Antigen Affinity Purified

Catalog No. A302-535A-T

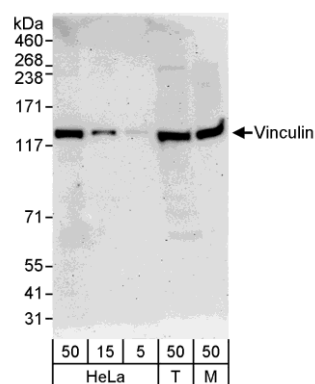
Protein ID NP_003364.1

Gene ID 7414



APPLICATIONS	WB, IP, IHC-P, IF
REACTIVITY TESTED	Human, Mouse
PRESUMED REACTIVITY	Based on 100% sequence identity, this antibody is predicted to react with Rat, Zebrafish, Chicken, Turkey, Bovine, Horse, Rabbit, Guinea pig_10141, Pig, Panda, Orangutan, Rhesus Monkey, Gorilla, Chimpanzee, Medaka fish, Nile tilapia, Duckbill platypus, Tasmanian devil and Spotted green pufferfish.
ISOTYPE	IgG
AMOUNT	20 µl (2 blots)
STORAGE/SHELF LIFE	2 - 8° C / 1 year from date of receipt
PHYSICAL STATE	Liquid
BUFFER	Tris-buffered Saline with 0.1% BSA containing 0.09% Sodium Azide
ORIGIN	USA
PRODUCTION PROCEDURES	Antibody was affinity purified using an epitope specific to Vinculin immobilized on solid support. The epitope recognized by A302-535A-T maps to a region between residue 1016 and 1066 of human vinculin using the numbering given in entry NP_003364.1 (GeneID 7414).
APPLICATIONS	Centrifuge tube to remove product from lid. Optimal working dilutions should be determined experimentally by the investigator. Prepare working dilution immediately before use. Western Blot 1:1000 Immunoprecipitation The antibody contained within A302-535A-T has been qualified for use in immunoprecipitation; however, we recommend using the alternative formulation of this antibody found as product A302-535A. Immunohistochemistry 1:50 to 1:200. Epitope retrieval with citrate buffer pH6.0 is recommended for FFPE tissue sections. Immunofluorescence 1:25 to 1:100
APPLICATION NOTES	Validation by IP/Western Blot was performed using a 4-8% SDS-PAGE gel and ReliaBLOT® Reagents (Cat. No. WB120).
ADDITIONAL INFO	http://www.bethyl.com/product/A302-535A-T Use the link above to view SDS, a current list of citations, and other product specific information.

Vinculin Antibody: A302-535A-T



Detection of Human and Mouse Vinculin by Western Blot.

Samples: Whole cell lysate from HeLa (5, 15, and 50 μg), 293T (T; 50 μg), and mouse NIH3T3 (M; 50 μg) cells. *Antibody:* Affinity purified rabbit anti-Vinculin antibody A302-535A-T used at 1:1000. *Detection:* Chemiluminescence with an exposure time of 3 minutes.