

NUP188 Antibody

Rabbit Polyclonal

Antigen Affinity Purified

Catalog No. A302-323A

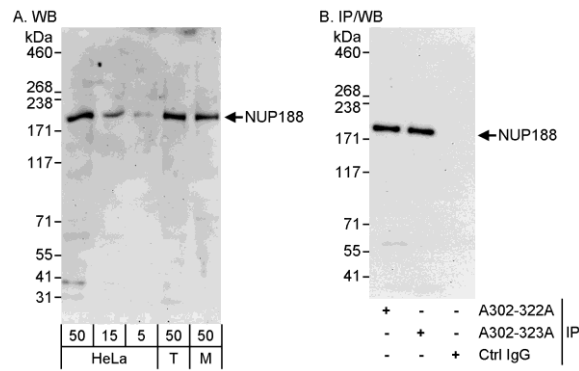
Protein ID NP_056169.

Gene ID 23511



APPLICATIONS	WB, IP				
REACTIVITY TESTED	Human, Mouse				
PRESUMED REACTIVITY	Based on 100% sequence identity, this antibody is predicted to react with Gorilla and Chimpanzee.				
ISOTYPE	IgG				
AMOUNT	0.1 ml at 1 mg/ml				
STORAGE/SHELF LIFE	2 - 8° C / 1 year from date of receipt				
PHYSICAL STATE	Liquid				
BUFFER	Tris-citrate/phosphate buffer, pH 7 to 8 containing 0.09% Sodium Azide				
ORIGIN	USA				
PRODUCTION PROCEDURES	<p>Antibody was affinity purified using an epitope specific to NUP188 immobilized on solid support.</p> <p>The epitope recognized by A302-323A maps to a region between residue 1699 and 1749 of human nucleoporin 188kDa using the numbering given in entry NP_056169.1 (GeneID 23511).</p> <p>Immunoglobulin concentration was determined by extinction coefficient: absorbance at 280 nm of 1.4 equals 1.0 mg of IgG.</p>				
APPLICATIONS	<p>Centrifuge tube to remove product from lid. Optimal working dilutions should be determined experimentally by the investigator. Prepare working dilution immediately before use.</p> <table><tr><td>Western Blot</td><td>1:1,000 to 1:5,000</td></tr><tr><td>Immunoprecipitation</td><td>10 µg/mg lysate</td></tr></table>	Western Blot	1:1,000 to 1:5,000	Immunoprecipitation	10 µg/mg lysate
Western Blot	1:1,000 to 1:5,000				
Immunoprecipitation	10 µg/mg lysate				
APPLICATION NOTES	Validation by IP/Western Blot was performed using ReliaBLOT® Western Blot Gel 4-8%, 10 x 10 cm (Cat. No. WB101-40812G) and ReliaBLOT® Reagents (Cat. No. WB120). Related products include ReliaBLOT® IP/WB kits, buffers and reagents.				
ADDITIONAL INFO	<p>http://www.bethyl.com/product/A302-323A</p> <p>Use the link above to view a current list of citations and other product specific information.</p>				

NUP188 Antibody: A302-323A



Detection of Human and Mouse NUP188 by Western Blot (h&m) and Immunoprecipitation (h). *Samples:* Whole cell lysate from HeLa (5, 15 and 50 µg for WB; 1 mg for IP, 20% of IP loaded), 293T (T; 50 µg), and mouse NIH3T3 (M; 50 µg) cells. *Antibodies:* Affinity purified rabbit anti-NUP188 antibody A302-323A used for WB at 0.4 µg/ml (A) and 1 µg/ml (B) and used for IP at 10 µg/mg lysate. NUP188 was also immunoprecipitated by rabbit anti-NUP188 antibody A302-322A, which recognizes an upstream epitope. *Detection:* Chemiluminescence with exposure times of 3 minutes (A) and 30 seconds (B).

MATERIAL SAFETY DATA SHEET

CONTENTS

This product contains Rabbit immunoglobulin G (IgG) protein in Tris-citrate/phosphate buffer, pH 7 to 8 containing 0.09% Sodium Azide.

INGREDIENT DESCRIPTIONS

HAZARDOUS:

Sodium Azide (NaN₃): Azide forms explosive chemical compounds with lead and copper plumbing. Care must be taken to wash waste down drains with large volumes of water. LD50 oral mouse 27 mg/kg. Wash all affected areas with large volumes of water and if swallowed consult your physician immediately.