

# CKI delta Antibody

Rabbit Polyclonal

Antigen Affinity Purified

Catalog No. A302-136A-T

Protein ID NP\_620693.1

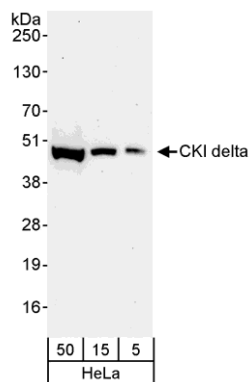
Gene ID 1453



|                              |   |
|------------------------------|---|
| <b>APPLICATIONS</b>          | WB, IP  |
| <b>REACTIVITY TESTED</b>     | Human   |
| <b>PRESUMED REACTIVITY</b>   | Based on 100% sequence identity, this antibody is predicted to react with Mouse, Rat, Chicken, Turkey, Bovine, Dog, Horse, Pig, Orangutan, Rhesus Monkey, White-tufted-ear marmoset, Golden hamster, Gray short-tailed opossum, Small-eared galago and Zebra finch.   |
| <b>ISOTYPE</b>               | IgG   |
| <b>AMOUNT</b>                | 20 µl (2 blots)   |
| <b>STORAGE/SHELF LIFE</b>    | 2 - 8° C / 1 year from date of receipt  |
| <b>PHYSICAL STATE</b>        | Liquid  |
| <b>BUFFER</b>                | Tris-buffered Saline with 0.1% BSA containing 0.09% Sodium Azide  |
| <b>ORIGIN</b>                | USA   |
| <b>PRODUCTION PROCEDURES</b> | Antibody was affinity purified using an epitope specific to CKI delta immobilized on solid support.<br><br>The epitope recognized by A302-136A-T maps to a region between residue 359 and 409 of human casein kinase 1, delta using the numbering given in entry NP_620693.1 (GeneID 1453). This antibody may have slight crossreactivity with CKI epsilon, which has a similar epitope.  |
| <b>APPLICATIONS</b>          | Centrifuge tube to remove product from lid. Optimal working dilutions should be determined experimentally by the investigator. Prepare working dilution immediately before use.<br><br>Western Blot                      1:1000<br><br>Immunoprecipitation            The antibody contained within A302-136A-T has been qualified for use in immunoprecipitation; however, we recommend using the alternative formulation of this antibody found as product A302-136A. |
| <b>APPLICATION NOTES</b>     | Validation by IP/Western Blot was performed using a 4-20% SDS-PAGE gel and ReliaBLOT® Reagents (Cat. No. WB120).  |
| <b>ADDITIONAL INFO</b>       | <a href="http://www.bethyl.com/product/A302-136A-T">http://www.bethyl.com/product/A302-136A-T</a><br><br>Use the link above to view SDS, a current list of citations, and other product specific information.   |

## CKI delta Antibody: A302-136A-T

---



**Detection of Human CKI delta by Western Blot.** *Samples:* Whole cell lysate (5, 15, and 50 µg) from HeLa cells. *Antibody:* Affinity purified rabbit anti-CKI delta antibody A302-136A-T used at 1:1000. *Detection:* Chemiluminescence with an exposure time of 30 seconds.