

Phospho RelA (S529) Antibody

Rabbit Polyclonal

Antigen Affinity Purified

Protein ID NP_068810.2

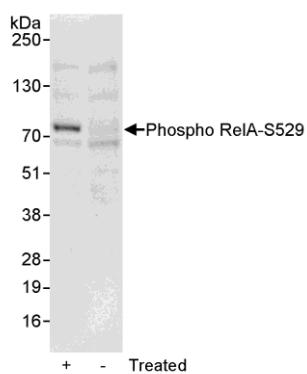
Catalog No. A302-063A-T

Gene ID 5970



APPLICATIONS	WB
REACTIVITY TESTED	Human
PRESUMED REACTIVITY	Based on 100% sequence identity, this antibody is predicted to react with Bovine, Dog, Horse, Pig, Panda, Orangutan, Rhesus Monkey, Gorilla, Chimpanzee, Primates, White-tufted-ear marmoset, Brown woolly monkey, Crab-eating macaque, Pig-tailed macaque, Pygmy chimpanzee, Bornean orangutan and Bushpig.
ISOTYPE	IgG
AMOUNT	20 µl (2 blots)
STORAGE/SHELF LIFE	2 - 8° C / 1 year from date of receipt
PHYSICAL STATE	Liquid
BUFFER	Tris-buffered Saline with 0.1% BSA containing 0.09% Sodium Azide
ORIGIN	USA
PRODUCTION PROCEDURES	Antibody was affinity purified using an epitope specific to Phospho RelA (S529) immobilized on solid support. The epitope recognized by A302-063A-T maps to a region of human v-rel reticuloendotheliosis viral oncogene homolog A surrounding serine 529 when serine 529 is phosphorylated using the numbering given in entry NP_068810.2 (GeneID 5970).
APPLICATIONS	Centrifuge tube to remove product from lid. Optimal working dilutions should be determined experimentally by the investigator. Prepare working dilution immediately before use. Western Blot 1:1000 Immunoprecipitation Not recommended.
APPLICATION NOTES	Validation by IP/Western Blot was performed using a 4-20% SDS-PAGE gel and ReliaBLOT® Reagents (Cat. No. WB120).
ADDITIONAL INFO	http://www.bethyl.com/product/A302-063A-T Use the link above to view SDS, a current list of citations, and other product specific information.

Phospho RelA (S529) Antibody: A302-063A-T



Detection of Human Phospho RelA (S529) by Western Blot.

Samples: Whole cell lysate (50 µg) from Jurkat cells that were treated with TNF alpha and Calyculin A (+) or mock treated (-).

Antibody: Affinity purified rabbit anti-Phospho RelA (S529) antibody A302-063A-T used at 1:1000.

Detection: Chemiluminescence with an exposure time of 30 seconds.