

# Phospho RelA (S536) Antibody

Rabbit Polyclonal

Antigen Affinity Purified

Protein ID NP\_068810.2

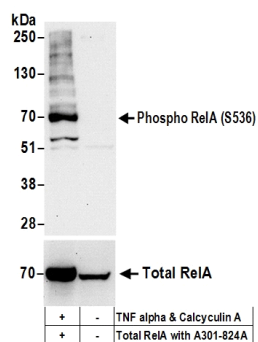
Catalog No. A302-062A-T

Gene ID 5970



<b>APPLICATIONS</b>	WB, IHC-P, IF
<b>REACTIVITY TESTED</b>	Human
<b>PRESUMED REACTIVITY</b>	Based on 100% sequence identity, this antibody is predicted to react with Mouse, Rat, Dog, Guinea pig_10141, Pig, Panda, Orangutan, Rhesus Monkey, Gorilla, Chimpanzee, Primates, White-tufted-ear marmoset, Crab-eating macaque, Pig-tailed macaque, Pygmy chimpanzee, Bornean orangutan and Bushpig.
<b>ISOTYPE</b>	IgG
<b>AMOUNT</b>	20 µl (2 blots)
<b>STORAGE/SHELF LIFE</b>	2 - 8° C / 1 year from date of receipt
<b>PHYSICAL STATE</b>	Liquid
<b>BUFFER</b>	Tris-buffered Saline with 0.1% BSA containing 0.09% Sodium Azide
<b>ORIGIN</b>	USA
<b>PRODUCTION PROCEDURES</b>	Antibody was affinity purified using an epitope specific to Phospho RelA (S536) immobilized on solid support.  The epitope recognized by A302-062A-T maps to a region of human v-rel reticuloendotheliosis viral oncogene homolog A surrounding serine 536 when serine 536 is phosphorylated using the numbering given in entry NP_068810.2 (GenID 5970).
<b>APPLICATIONS</b>	Centrifuge tube to remove product from lid. Optimal working dilutions should be determined experimentally by the investigator. Prepare working dilution immediately before use.  Western Blot                      1:1000 Immunoprecipitation            Not recommended. Immunohistochemistry        1:100 to 1:400. Epitope retrieval with Tris-EDTA pH9.0 is recommended for FFPE tissue sections. Immunofluorescence        1:50 to 1:200
<b>APPLICATION NOTES</b>	Validation by IP/Western Blot was performed using a 4-20% SDS-PAGE gel and ReliaBLOT® Reagents (Cat. No. WB120). IHC validation was performed using Immunohistochemistry Accessory Kit (Cat. # IHC-101). Epitope Retrieval Buffer- High pH Concentrate (Cat. # IHC-101J) was substituted for Epitope Retrieval Buffer - Reduced pH Concentrate.
<b>ADDITIONAL INFO</b>	<a href="http://www.bethyl.com/product/A302-062A-T">http://www.bethyl.com/product/A302-062A-T</a>  Use the link above to view SDS, a current list of citations, and other product specific information.

## Phospho RelA (S536) Antibody: A302-062A-T



### Detection of Human phospho RelA-S536 by Western Blot.

**Samples:** Whole cell lysate (50  $\mu$ g) from Jurkat cells treated with TNF alpha and Calyculin A (+) or mock treated (-). **Antibody:** Affinity purified rabbit anti-Phospho RelA (S536) antibody A302-062A-T (lot A302-062A-T-6) used for WB at 1:1000. **Detection:** Chemiluminescence with an exposure time of 30 seconds. Lower panel: Western Blot for total RelA using affinity purified rabbit anti-RelA antibody A301-824A at 0.1  $\mu$ g/ml with an exposure time of 3 minutes.