

CDK2 Antibody

Rabbit Polyclonal

Antigen Affinity Purified

Protein ID NP_001789.2

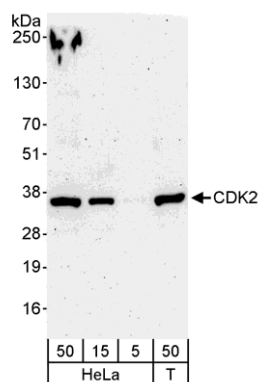
Catalog No. A301-812A-T

Gene ID 1017



APPLICATIONS	WB, IP, PLA, IHC-P, IF
REACTIVITY TESTED	Human, Mouse
PRESUMED REACTIVITY	Based on 100% sequence identity, this antibody is predicted to react with Rat, Sheep, Goat, Bovine, Dog, Horse, Rabbit, Pig, Panda, Orangutan, Rhesus Monkey, Gorilla, Chimpanzee, White-tufted-ear marmoset, Crab-eating macaque, African elephant, Chinese hamster and Northern white-cheeked gibbon.
ISOTYPE	IgG
AMOUNT	20 µl (2 blots)
STORAGE/SHELF LIFE	2 - 8° C / 1 year from date of receipt
PHYSICAL STATE	Liquid
BUFFER	Tris-buffered Saline with 0.1% BSA containing 0.09% Sodium Azide
ORIGIN	USA
PRODUCTION PROCEDURES	Antibody was affinity purified using an epitope specific to CDK2 immobilized on solid support. The epitope recognized by A301-812A-T maps to a region between residue 248 and 298 of human cyclin-dependent kinase 2 using the numbering given in entry NP_001789.2 (GeneID 1017).
APPLICATIONS	Centrifuge tube to remove product from lid. Optimal working dilutions should be determined experimentally by the investigator. Prepare working dilution immediately before use. Western Blot 1:1000 Immunoprecipitation The antibody contained within A301-812A-T has been qualified for use in immunoprecipitation; however, we recommend using the alternative formulation of this antibody found as product A301-812A. Immunohistochemistry 1:50 to 1:200. Epitope retrieval with Tris-EDTA pH9.0 is recommended for FFPE tissue sections. Immunofluorescence 1:25 to 1:200 Proximity Ligation Assay The antibody contained within A301-812A-T has been qualified for use in PLA; however, we recommend using the alternative formulation of this antibody found as product A301-812A.
APPLICATION NOTES	Validation by IP/Western Blot was performed using a 4-20% SDS-PAGE gel and ReliaBLOT® Reagents (Cat. No. WB120).
ADDITIONAL INFO	http://www.bethyl.com/product/A301-812A-T Use the link above to view SDS, a current list of citations, and other product specific information.

CDK2 Antibody: A301-812A-T



Detection of Human CDK2 by Western Blot. *Samples:* Whole cell lysate from HeLa (5, 15, and 50 µg) and 293T (T; 50 µg) cells. *Antibody:* Affinity purified rabbit anti-CDK2 antibody A301-812A-T used at 1:1000. *Detection:* Chemiluminescence with an exposure time of 3 minutes.