

# SOX2 Antibody

Rabbit Polyclonal

Antigen Affinity Purified

Catalog No. A301-741A-T

Protein ID NP\_003097.

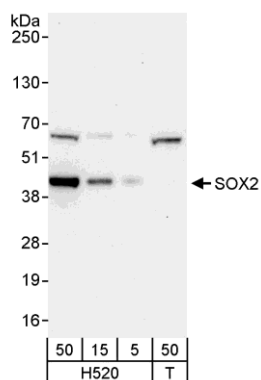
Gene ID 6657



<b>APPLICATIONS</b>	WB, IP
<b>REACTIVITY TESTED</b>	Human
<b>PRESUMED REACTIVITY</b>	Based on 100% sequence identity, this antibody is predicted to react with Mouse, Rat, <i>X. laevis</i> , <i>X. tropicalis</i> , Chicken, Sheep, Bovine, Dog, Horse, Rabbit, Guinea pig_10141, Pig, Panda, Orangutan, Rhesus Monkey, Gorilla, Chimpanzee, West Indian ocean coelacanth, Atlantic salmon and Southern vole.
<b>ISOTYPE</b>	IgG
<b>AMOUNT</b>	20 µl (2 blots)
<b>STORAGE/SHELF LIFE</b>	2 - 8° C / 1 year from date of receipt
<b>PHYSICAL STATE</b>	Liquid
<b>BUFFER</b>	Tris-buffered Saline with 0.1% BSA containing 0.09% Sodium Azide
<b>ORIGIN</b>	USA
<b>PRODUCTION PROCEDURES</b>	Antibody was affinity purified using an epitope specific to SOX2 immobilized on solid support.  The epitope recognized by A301-741A-T maps to a region between residue 295 and 317 of human SRY (sex determining region Y)-box 2 using the numbering given in entry NP_003097.1 (GeneID 6657).
<b>APPLICATIONS</b>	Centrifuge tube to remove product from lid. Optimal working dilutions should be determined experimentally by the investigator. Prepare working dilution immediately before use.  Western Blot                      1:1000  Immunoprecipitation              The antibody contained within A301-741A-T has been qualified for use in immunoprecipitation; however, we recommend using the alternative formulation of this antibody found as product A301-741A.
<b>APPLICATION NOTES</b>	Validation by IP/Western Blot was performed using a 4-20% SDS-PAGE gel and ReliaBLOT® Reagents (Cat. No. WB120).
<b>ADDITIONAL INFO</b>	<a href="http://www.bethyl.com/product/A301-741A-T">http://www.bethyl.com/product/A301-741A-T</a>  Use the link above to view SDS, a current list of citations, and other product specific information.

## SOX2 Antibody: A301-741A-T

---



**Detection of Human SOX2 by Western Blot.** *Samples:* Whole cell lysate from H520 (5, 15, and 50 μg) and 293T (T; 50 μg) cells. *Antibody:* Affinity purified rabbit anti-SOX2 antibody A301-741A-T used at 1:1000. *Detection:* Chemiluminescence with an exposure time of 10 seconds.