

ERCC5/XPG Antibody

Rabbit Polyclonal

Antigen Affinity Purified

Protein ID NP_000114.2

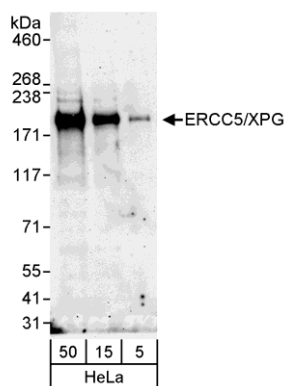
Catalog No. A301-484A-T

Gene ID 2073



APPLICATIONS	WB, IP, IHC-P, IF								
REACTIVITY TESTED	Human								
PRESUMED REACTIVITY	Based on 100% sequence identity, this antibody is predicted to react with Gorilla and Chimpanzee.								
ISOTYPE	IgG								
AMOUNT	20 µl (2 blots)								
STORAGE/SHELF LIFE	2 - 8° C / 1 year from date of receipt								
PHYSICAL STATE	Liquid								
BUFFER	Tris-buffered Saline with 0.1% BSA containing 0.09% Sodium Azide								
ORIGIN	USA								
PRODUCTION PROCEDURES	<p>Antibody was affinity purified using an epitope specific to ERCC5/XPG immobilized on solid support.</p> <p>The epitope recognized by A301-484A-T maps to a region between residue 650 and 700 of human excision repair cross-complementing rodent repair deficiency, complementation group 5 (xeroderma pigmentosum, complementation group G (Cockayne syndrome)) using the numbering given in entry NP_000114.2 (GeneID 2073).</p>								
APPLICATIONS	<p>Centrifuge tube to remove product from lid. Optimal working dilutions should be determined experimentally by the investigator. Prepare working dilution immediately before use.</p> <table><tr><td>Western Blot</td><td>1:1000</td></tr><tr><td>Immunoprecipitation</td><td>The antibody contained within A301-484A-T has been qualified for use in immunoprecipitation; however, we recommend using the alternative formulation of this antibody found as product A301-484A.</td></tr><tr><td>Immunohistochemistry</td><td>1:20 to 1:100. Epitope retrieval with citrate buffer pH6.0 is recommended for FFPE tissue sections.</td></tr><tr><td>Immunofluorescence</td><td>1:10 to 1:100</td></tr></table>	Western Blot	1:1000	Immunoprecipitation	The antibody contained within A301-484A-T has been qualified for use in immunoprecipitation; however, we recommend using the alternative formulation of this antibody found as product A301-484A.	Immunohistochemistry	1:20 to 1:100. Epitope retrieval with citrate buffer pH6.0 is recommended for FFPE tissue sections.	Immunofluorescence	1:10 to 1:100
Western Blot	1:1000								
Immunoprecipitation	The antibody contained within A301-484A-T has been qualified for use in immunoprecipitation; however, we recommend using the alternative formulation of this antibody found as product A301-484A.								
Immunohistochemistry	1:20 to 1:100. Epitope retrieval with citrate buffer pH6.0 is recommended for FFPE tissue sections.								
Immunofluorescence	1:10 to 1:100								
APPLICATION NOTES	Validation by IP/Western Blot was performed using a 4-8% SDS-PAGE gel and ReliaBLOT® Reagents (Cat. No. WB120).								
ADDITIONAL INFO	<p>http://www.bethyl.com/product/A301-484A-T</p> <p>Use the link above to view SDS, a current list of citations, and other product specific information.</p>								

ERCC5/XPG Antibody: A301-484A-T



Detection of Human ERCC5/XPG by Western Blot. *Samples:* Whole cell lysate (5, 15, and 50 μ g) from HeLa cells. *Antibody:* Affinity purified rabbit anti-ERCC5/XPG antibody A301-484A-T used at 1:1000. *Detection:* Chemiluminescence with an exposure time of 3 minutes.