

PARP1 Antibody

Rabbit Polyclonal

Antigen Affinity Purified

Protein ID NP_001609.1

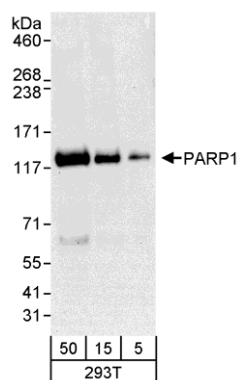
Catalog No. A301-376A-T

Gene ID 142



APPLICATIONS	WB, IHC-P, IF
REACTIVITY TESTED	Human
PRESUMED REACTIVITY	Based on 100% sequence identity, this antibody is predicted to react with Dog, Horse, Orangutan, Rhesus Monkey, Gorilla, Chimpanzee, Crab-eating macaque and European domestic ferret.
ISOTYPE	IgG
AMOUNT	20 µl (2 blots)
STORAGE/SHELF LIFE	2 - 8° C / 1 year from date of receipt
PHYSICAL STATE	Liquid
BUFFER	Tris-buffered Saline with 0.1% BSA containing 0.09% Sodium Azide
ORIGIN	USA
PRODUCTION PROCEDURES	Antibody was affinity purified using an epitope specific to PARP1 immobilized on solid support. The epitope recognized by A301-376A-T maps to a region between residue 50 and 100 of human poly (ADP-ribose) polymerase family, member 1 using the numbering given in entry NP_001609.1 (GeneID 142).
APPLICATIONS	Centrifuge tube to remove product from lid. Optimal working dilutions should be determined experimentally by the investigator. Prepare working dilution immediately before use. Western Blot 1:1000 Immunoprecipitation Not recommended. Immunohistochemistry 1:20 to 1:100. Epitope retrieval with citrate buffer pH6.0 is recommended for FFPE tissue sections. Immunofluorescence 1:10 to 1:50
APPLICATION NOTES	Validation by IP/Western Blot was performed using a 4-8% SDS-PAGE gel and ReliaBLOT® Reagents (Cat. No. WB120).
ADDITIONAL INFO	http://www.bethyl.com/product/A301-376A-T Use the link above to view SDS, a current list of citations, and other product specific information.

PARP1 Antibody: A301-376A-T



Detection of Human PARP1 by Western Blot. *Samples:* Whole cell lysate (5, 15, and 50 μ g) from 293T cells. *Antibody:* Affinity purified rabbit anti-PARP1 antibody A301-376A-T used at 1:1000. *Detection:* Chemiluminescence with an exposure time of 30 seconds.