

PARP1 Antibody

Rabbit Polyclonal

Antigen Affinity Purified

Catalog No. A301-375A-T

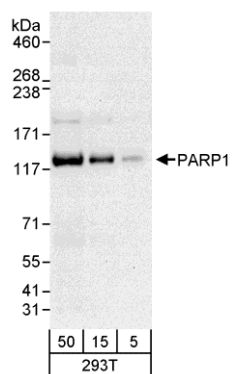
Protein ID NP_001609.1

Gene ID 142



APPLICATIONS	WB, PLA
REACTIVITY TESTED	Human
PRESUMED REACTIVITY	Based on 100% sequence identity, this antibody is predicted to react with Bovine, Rabbit, Pig, Rhesus Monkey, Gorilla, Chimpanzee, White-tufted-ear marmoset, Crab-eating macaque, Small-eared galago, Thirteen-lined ground squirrel and Northern white-cheeked gibbon.
ISOTYPE	IgG
AMOUNT	20 µl (2 blots)
STORAGE/SHELF LIFE	2 - 8° C / 1 year from date of receipt
PHYSICAL STATE	Liquid
BUFFER	Tris-buffered Saline with 0.1% BSA containing 0.09% Sodium Azide
ORIGIN	USA
PRODUCTION PROCEDURES	Antibody was affinity purified using an epitope specific to PARP1 immobilized on solid support. The epitope recognized by A301-375A-T maps to a region between residue 1 and 50 of human poly (ADP-ribose) polymerase family, member 1 using the numbering given in entry NP_001609.1 (GeneID 142).
APPLICATIONS	Centrifuge tube to remove product from lid. Optimal working dilutions should be determined experimentally by the investigator. Prepare working dilution immediately before use. Western Blot 1:1000 Immunoprecipitation Not recommended. Proximity Ligation Assay The antibody contained within A301-375A-T has been qualified for use in PLA; however, we recommend using the alternative formulation of this antibody found as product A301-375A.
APPLICATION NOTES	Validation by IP/Western Blot was performed using a 4-8% SDS-PAGE gel and ReliaBLOT® Reagents (Cat. No. WB120).
ADDITIONAL INFO	http://www.bethyl.com/product/A301-375A-T Use the link above to view SDS, a current list of citations, and other product specific information.

PARP1 Antibody: A301-375A-T



Detection of Human PARP1 by Western Blot. *Samples:* Whole cell lysate (5, 15, and 50 µg) from 293T cells. *Antibody:* Affinity purified rabbit anti-PARP1 antibody A301-375A-T used at 1:1000. *Detection:* Chemiluminescence with an exposure time of 30 seconds.