

# ATRX Antibody

Rabbit Polyclonal

Antigen Affinity Purified

Protein ID NP\_000480.2

Catalog No. A301-045A-T

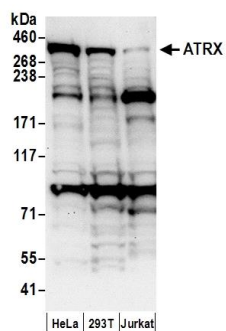
Gene ID 546



<b>APPLICATIONS</b>	WB, IP, IHC-P, IF, PLA
<b>REACTIVITY TESTED</b>	Human
<b>PRESUMED REACTIVITY</b>	Based on 100% sequence identity, this antibody is predicted to react with Rabbit, Pig, Panda, Orangutan, Rhesus Monkey, Gorilla, Chimpanzee, Tasmanian devil, Tammar wallaby, Crab-eating macaque, Bornean orangutan, Small-eared galago, Thirteen-lined ground squirrel and Northern white-cheeked gibbon.
<b>ISOTYPE</b>	IgG
<b>AMOUNT</b>	20 µl (2 blots)
<b>STORAGE/SHELF LIFE</b>	2 - 8° C / 1 year from date of receipt
<b>PHYSICAL STATE</b>	Liquid
<b>BUFFER</b>	Tris-buffered Saline with 0.1% BSA containing 0.09% Sodium Azide
<b>ORIGIN</b>	USA
<b>PRODUCTION PROCEDURES</b>	Antibody was affinity purified using an epitope specific to ATRX immobilized on solid support.  The epitope recognized by A301-045A-T maps to a region between residue 2442 and the C-terminus (residue 2492) of human alpha thalassemia/mental retardation syndrome X-linked using the numbering given in entry NP_000480.2 (GeneID 546).
<b>APPLICATIONS</b>	Centrifuge tube to remove product from lid. Optimal working dilutions should be determined experimentally by the investigator. Prepare working dilution immediately before use.  Western Blot 1:1000  Immunoprecipitation The antibody contained within A301-045A-T has been qualified for use in immunoprecipitation; however, we recommend using the alternative formulation of this antibody found as product A301-045A.  Immunohistochemistry 1:200 to 1:800. Epitope retrieval with citrate buffer pH6.0 is recommended for FFPE tissue sections.  Immunofluorescence 1:100 to 1:800  Proximity Ligation Assay The antibody contained within A301-045A-T has been qualified for use in PLA; however, we recommend using the alternative formulation of this antibody found as product A301-045A.
<b>APPLICATION NOTES</b>	Validation by IP/Western Blot was performed using a 4-8% SDS-PAGE gel and ReliaBLOT® Reagents (Cat. No. WB120).
<b>ADDITIONAL INFO</b>	<a href="http://www.bethyl.com/product/A301-045A-T">http://www.bethyl.com/product/A301-045A-T</a>  Use the link above to view SDS, a current list of citations, and other product specific information.

## ATRX Antibody: A301-045A-T

---



**Detection of Human ATRX by Western Blot.** *Samples:* Whole cell lysate (50 µg) from HeLa, 293T, and Jurkat cells prepared using NETN lysis buffer. *Antibody:* Affinity purified rabbit anti-ATRX antibody A301-045A-T used at 1:1000. *Detection:* Chemiluminescence with an exposure time of 30 seconds.