

PPP2R1A Antibody

Rabbit Polyclonal

Antigen Affinity Purified

Catalog No. A300-963A-T

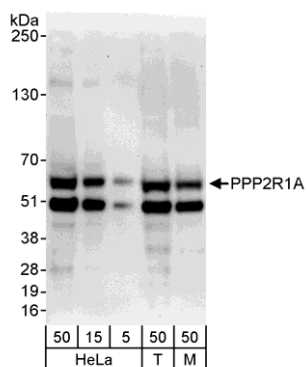
Protein ID NP_055040.2

Gene ID 5518



APPLICATIONS	WB, IP
REACTIVITY TESTED	Human, Mouse
PRESUMED REACTIVITY	Based on 100% sequence identity, this antibody is predicted to react with Rat, Bovine, Horse, Guinea pig_10141, Pig, Panda, Orangutan, Rhesus Monkey, Gorilla, Chimpanzee, White-tufted-ear marmoset, Crab-eating macaque, African elephant, Chinese hamster and Northern white-cheeked gibbon.
ISOTYPE	IgG
AMOUNT	20 µl (2 blots)
STORAGE/SHELF LIFE	2 - 8° C / 1 year from date of receipt
PHYSICAL STATE	Liquid
BUFFER	Tris-buffered Saline with 0.1% BSA containing 0.09% Sodium Azide
ORIGIN	USA
PRODUCTION PROCEDURES	Antibody was affinity purified using an epitope specific to PPP2R1A immobilized on solid support. The epitope recognized by A300-963A-T maps to a region between residue 540 and the C-terminus (residue 588) of human protein phosphatase 2 (formerly 2A), regulatory subunit A (PR 65), alpha isoform using the numbering given in entry NP_055040.2 (GeneID 5518).
APPLICATIONS	Centrifuge tube to remove product from lid. Optimal working dilutions should be determined experimentally by the investigator. Prepare working dilution immediately before use. Western Blot 1:1000 Immunoprecipitation The antibody contained within A300-963A-T has been qualified for use in immunoprecipitation; however, we recommend using the alternative formulation of this antibody found as product A300-963A.
APPLICATION NOTES	Validation by IP/Western Blot was performed using a 4-20% SDS-PAGE gel and ReliaBLOT® Reagents (Cat. No. WB120).
ADDITIONAL INFO	http://www.bethyl.com/product/A300-963A-T Use the link above to view SDS, a current list of citations, and other product specific information.

PPP2R1A Antibody: A300-963A-T



Detection of Human and Mouse PPP2R1A by Western Blot.

Samples: Whole cell lysate from HeLa (5, 15, and 50 µg), 293T (T; 50 µg) and mouse NIH3T3 (M; 50 µg) cells. *Antibody:* Affinity purified rabbit anti-PPP2R1A antibody A300-963A-T used at 1:1000. *Detection:* Chemiluminescence with an exposure time of 30 seconds.