

# RbBP7 Antibody

Rabbit Polyclonal

Antigen Affinity Purified

Protein ID AAC50231.1

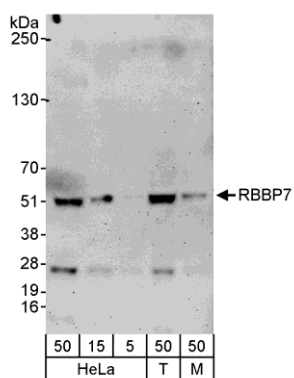
Catalog No. A300-958A-T

Gene ID 5931



<b>APPLICATIONS</b>	WB, IP, IHC-P, IF, PLA
<b>REACTIVITY TESTED</b>	Human, Mouse
<b>PRESUMED REACTIVITY</b>	Based on 100% sequence identity, this antibody is predicted to react with Rat, Bovine, Dog, Rabbit, Guinea pig_10141, Pig, Orangutan, Rhesus Monkey, White-tufted-ear marmoset, Crab-eating macaque and European domestic ferret.
<b>ISOTYPE</b>	IgG
<b>AMOUNT</b>	20 µl (2 blots)
<b>STORAGE/SHELF LIFE</b>	2 - 8° C / 1 year from date of receipt
<b>PHYSICAL STATE</b>	Liquid
<b>BUFFER</b>	Tris-buffered Saline with 0.1% BSA containing 0.09% Sodium Azide
<b>ORIGIN</b>	USA
<b>PRODUCTION PROCEDURES</b>	Antibody was affinity purified using an epitope specific to RbBP7 immobilized on solid support.  The epitope recognized by A300-958A-T maps to a region between residue 1 and 50 of human Retinoblastoma Binding Protein 7 using the numbering given in entry AAC50231.1 (GeneID 5931).
<b>APPLICATIONS</b>	Centrifuge tube to remove product from lid. Optimal working dilutions should be determined experimentally by the investigator. Prepare working dilution immediately before use.  Western Blot 1:1000  Immunoprecipitation The antibody contained within A300-958A-T has been qualified for use in immunoprecipitation; however, we recommend using the alternative formulation of this antibody found as product A300-958A.  Immunohistochemistry 1:40 to 1:200. Epitope retrieval with citrate buffer pH6.0 is recommended for FFPE tissue sections.  Immunofluorescence 1:20 to 1:100  Proximity Ligation Assay The antibody contained within A300-958A-T has been qualified for use in PLA; however, we recommend using the alternative formulation of this antibody found as product A300-958A.
<b>APPLICATION NOTES</b>	Validation by IP/Western Blot was performed using a 4-20% SDS-PAGE gel and ReliaBLOT® Reagents (Cat. No. WB120).
<b>ADDITIONAL INFO</b>	<a href="http://www.bethyl.com/product/A300-958A-T">http://www.bethyl.com/product/A300-958A-T</a>  Use the link above to view SDS, a current list of citations, and other product specific information.

## RbBP7 Antibody: A300-958A-T



### Detection of Human and Mouse RbBP7 by Western Blot.

**Samples:** Whole cell lysate from HeLa (5, 15, and 50  $\mu\text{g}$ ), 293T (T; 50  $\mu\text{g}$ ) and mouse NIH3T3 (M; 50  $\mu\text{g}$ ) cells. **Antibody:** Affinity purified rabbit anti-RbBP7 antibody A300-958A-T used at 1:1000. **Detection:** Chemiluminescence with an exposure time of 3 minutes.