

PPP5C Antibody

Rabbit Polyclonal

Antigen Affinity Purified

Catalog No. A300-909A

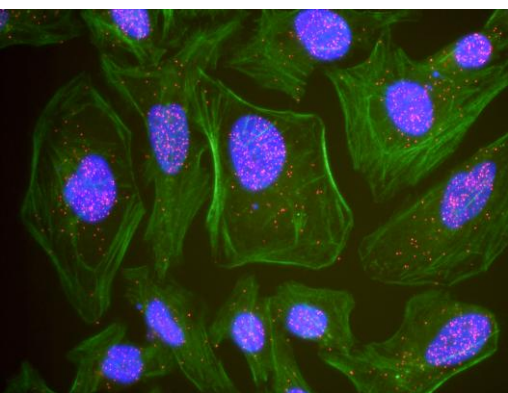
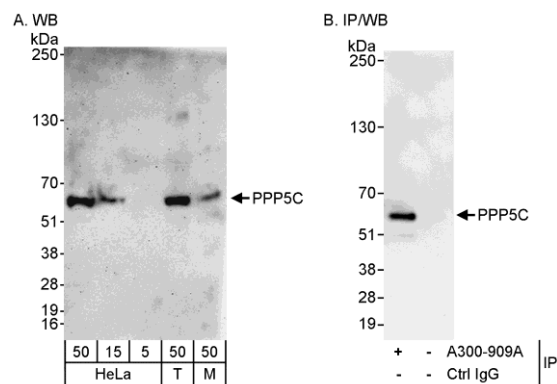
Protein ID NP_006238.1

Gene ID 5536



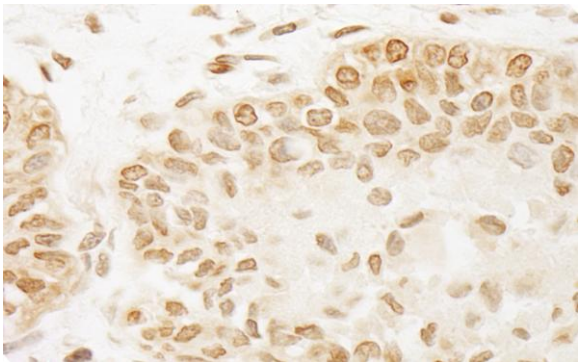
APPLICATIONS	WB, IP, IHC-P, IF, PLA										
REACTIVITY TESTED	Human, Mouse										
PRESUMED REACTIVITY	Based on 100% sequence identity, this antibody is predicted to react with Rat, Bovine, Guinea pig_10141, Pig, Panda, Orangutan, Rhesus Monkey, Gorilla, Chimpanzee, White-tufted-ear marmoset, Crab-eating macaque, Naked mole rat, Small-eared galago and Thirteen-lined ground squirrel.										
ISOTYPE	IgG										
AMOUNT	0.1 ml at 0.2 mg/ml										
STORAGE/SHELF LIFE	2 - 8° C / 1 year from date of receipt										
PHYSICAL STATE	Liquid										
BUFFER	Tris-buffered Saline containing 0.1% BSA containing 0.09% Sodium Azide										
ORIGIN	USA										
PRODUCTION PROCEDURES	<p>Antibody was affinity purified using an epitope specific to PPP5C immobilized on solid support.</p> <p>The epitope recognized by A300-909A maps to a region between residue 1 and 50 of human Protein Phosphatase 5, Catalytic Subunit using the numbering given in entry NP_006238.1 (GeneID 5536).</p> <p>Immunoglobulin concentration was determined by extinction coefficient: absorbance at 280 nm of 1.4 equals 1.0 mg of IgG.</p>										
APPLICATIONS	<p>Centrifuge tube to remove product from lid. Optimal working dilutions should be determined experimentally by the investigator. Prepare working dilution immediately before use.</p> <table><tr><td>Western Blot</td><td>1:2,000 to 1:10,000</td></tr><tr><td>Immunoprecipitation</td><td>2 to 5 µg/mg lysate</td></tr><tr><td>Immunohistochemistry</td><td>1:200 to 1:1,000. Epitope retrieval with Tris-EDTA pH9.0 is recommended for FFPE tissue sections.</td></tr><tr><td>Immunofluorescence</td><td>1:100 to 1:500.</td></tr><tr><td>Proximity Ligation Assay</td><td>1:200 - 1:2,000</td></tr></table>	Western Blot	1:2,000 to 1:10,000	Immunoprecipitation	2 to 5 µg/mg lysate	Immunohistochemistry	1:200 to 1:1,000. Epitope retrieval with Tris-EDTA pH9.0 is recommended for FFPE tissue sections.	Immunofluorescence	1:100 to 1:500.	Proximity Ligation Assay	1:200 - 1:2,000
Western Blot	1:2,000 to 1:10,000										
Immunoprecipitation	2 to 5 µg/mg lysate										
Immunohistochemistry	1:200 to 1:1,000. Epitope retrieval with Tris-EDTA pH9.0 is recommended for FFPE tissue sections.										
Immunofluorescence	1:100 to 1:500.										
Proximity Ligation Assay	1:200 - 1:2,000										
APPLICATION NOTES	<p>Validation by IP/Western Blot was performed using ReliaBLOT® Western Blot Gel 4-20%, 10 x 10 cm (Cat. No. WB101-42012G) and ReliaBLOT® Reagents (Cat. No. WB120). Related products include ReliaBLOT® IP/WB kits, buffers and reagents.</p> <p>IHC validation was performed using Immunohistochemistry Accessory Kit (Cat. # IHC-101). Epitope Retrieval Buffer- High pH Concentrate (Cat. # IHC-101J) was substituted for Epitope Retrieval Buffer - Reduced pH Concentrate.</p>										
IHC HUMAN CONTROLS	Breast Carcinoma, Prostate Carcinoma										
IHC MOUSE CONTROLS	Teratoma										
ADDITIONAL INFO	<p>http://www.bethyl.com/product/A300-909A</p> <p>Use the link above to view a current list of citations and other product specific information.</p>										

PPP5C Antibody: A300-909A



Detection of Human and Mouse PPP5C by WB (h&m) and Immunoprecipitation (h). *Samples:* Whole cell lysate from HeLa (5, 15 and 50 µg for WB; 1 mg for IP, 20% of IP loaded), 293T (T; 50 µg), and mouse NIH3T3 (M; 50 µg) cells. *Antibody:* Affinity purified rabbit anti-PPP5C antibody A300-909A used for WB at 0.04 µg/ml (A) and 1 µg/ml (B) and used for IP at 3 µg/mg lysate (B). *Detection:* Chemiluminescence with exposure times of 3 minutes (A) and 5 seconds (B).

This antibody is qualified for the Proximity Ligation Assay (PLA). PLA uses paired antibodies, so please refer to the PLA page of our website for specific imaging obtained by pairing this antibody with other qualified antibodies. The above image shows representative results for PLA using three color fluorescence, including DAPI stained nuclei (blue), phalloidin stained cytoplasmic F-actin (green), and PLA positive signal (red).



Detection of Human PPP5C by Immunohistochemistry. *Sample:* FFPE section of human prostate carcinoma. *Antibody:* Affinity purified rabbit anti-PPP5C (Cat. No. A300-909A Lot1) used at a dilution of 1:200 (1µg/ml). *Detection:* DAB

MATERIAL SAFETY DATA SHEET

CONTENTS This product contains Rabbit immunoglobulin G (IgG) protein in Tris-buffered Saline containing 0.1% BSA containing 0.09% Sodium Azide.

INGREDIENT DESCRIPTIONS **NON-HAZARDOUS:**

Bovine Serum Albumin (BSA) – This product was derived from animals free of infectious or contagious diseases of U.S. Origin. No known toxicity for this biological material.

HAZARDOUS:

Sodium Azide (NaN3): Azide forms explosive chemical compounds with lead and copper plumbing. Care must be taken to wash waste down drains with large volumes of water. LD50 oral mouse 27 mg/kg. Wash all affected areas with large volumes of water and if swallowed consult your physician immediately.