

PPP5C Antibody

Rabbit Polyclonal

Antigen Affinity Purified

Protein ID NP_006238.1

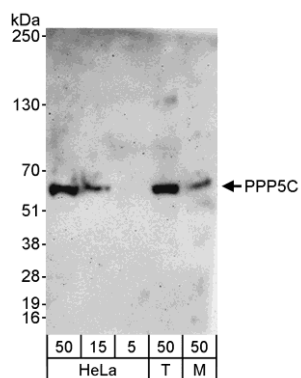
Catalog No. A300-909A-T

Gene ID 5536



APPLICATIONS	WB, IP, IHC-P, IF, PLA
REACTIVITY TESTED	Human, Mouse
PRESUMED REACTIVITY	Based on 100% sequence identity, this antibody is predicted to react with Rat, Bovine, Guinea pig_10141, Pig, Panda, Orangutan, Rhesus Monkey, Gorilla, Chimpanzee, White-tufted-ear marmoset, Crab-eating macaque, Naked mole rat, Small-eared galago and Thirteen-lined ground squirrel.
ISOTYPE	IgG
AMOUNT	20 µl (2 blots)
STORAGE/SHELF LIFE	2 - 8° C / 1 year from date of receipt
PHYSICAL STATE	Liquid
BUFFER	Tris-buffered Saline with 0.1% BSA containing 0.09% Sodium Azide
ORIGIN	USA
PRODUCTION PROCEDURES	Antibody was affinity purified using an epitope specific to PPP5C immobilized on solid support. The epitope recognized by A300-909A-T maps to a region between residue 1 and 50 of human Protein Phosphatase 5, Catalytic Subunit using the numbering given in entry NP_006238.1 (GeneID 5536).
APPLICATIONS	Centrifuge tube to remove product from lid. Optimal working dilutions should be determined experimentally by the investigator. Prepare working dilution immediately before use. Western Blot 1:1000 Immunoprecipitation The antibody contained within A300-909A-T has been qualified for use in immunoprecipitation; however, we recommend using the alternative formulation of this antibody found as product A300-909A. Immunohistochemistry 1:40 to 1:200. Epitope retrieval with Tris-EDTA pH9.0 is recommended for FFPE tissue sections. Immunofluorescence 1:20 to 1:100 Proximity Ligation Assay The antibody contained within A300-909A-T has been qualified for use in PLA; however, we recommend using the alternative formulation of this antibody found as product A300-909A.
APPLICATION NOTES	Validation by IP/Western Blot was performed using a 4-20% SDS-PAGE gel and ReliaBLOT® Reagents (Cat. No. WB120).
ADDITIONAL INFO	http://www.bethyl.com/product/A300-909A-T Use the link above to view SDS, a current list of citations, and other product specific information.

PPP5C Antibody: A300-909A-T



Detection of Human and Mouse PPP5C by Western Blot.

Samples: Whole cell lysate from HeLa (5, 15, and 50 μ g), 293T (T; 50 μ g), and mouse NIH3T3 (M; 50 μ g) cells. *Antibody:* Affinity purified rabbit anti-PPP5C antibody A300-909A-T used at 1:1000. *Detection:* Chemiluminescence with an exposure time of 3 minutes.