

PPP3CA Antibody

Rabbit Polyclonal

Antigen Affinity Purified

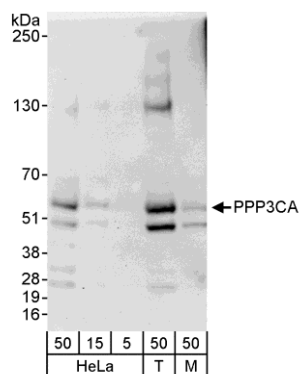
Protein ID NP_000935.1

Catalog No. A300-907A-T

Gene ID 5530



APPLICATIONS	WB, IP, IHC-P, IF
REACTIVITY TESTED	Human, Mouse
PRESUMED REACTIVITY	Based on 100% sequence identity, this antibody is predicted to react with Rat, Bovine, Dog, Rabbit, Pig, Panda, Orangutan, Rhesus Monkey, Gorilla, Chimpanzee, White-tufted-ear marmoset, European domestic ferret, African elephant and Northern white-cheeked gibbon.
ISOTYPE	IgG
AMOUNT	20 µl (2 blots)
STORAGE/SHELF LIFE	2 - 8° C / 1 year from date of receipt
PHYSICAL STATE	Liquid
BUFFER	Tris-buffered Saline with 0.1% BSA containing 0.09% Sodium Azide
ORIGIN	USA
PRODUCTION PROCEDURES	Antibody was affinity purified using an epitope specific to PPP3CA immobilized on solid support. The epitope recognized by A300-907A-T maps to a region between residue 1 and 50 of human Protein Phosphatase 3, Catalytic Subunit, Alpha isoform using the numbering given in entry NP_000935.1 (GeneID 5530).
APPLICATIONS	Centrifuge tube to remove product from lid. Optimal working dilutions should be determined experimentally by the investigator. Prepare working dilution immediately before use. Western Blot 1:1000 Immunoprecipitation The antibody contained within A300-907A-T has been qualified for use in immunoprecipitation; however, we recommend using the alternative formulation of this antibody found as product A300-907A. Immunohistochemistry 1:200 to 1:800. Epitope retrieval with Tris-EDTA pH9.0 is recommended for FFPE tissue sections. Immunofluorescence 1:100 to 1:400
APPLICATION NOTES	Validation by IP/Western Blot was performed using a 4-20% SDS-PAGE gel and ReliaBLOT® Reagents (Cat. No. WB120).
ADDITIONAL INFO	http://www.bethyl.com/product/A300-907A-T Use the link above to view SDS, a current list of citations, and other product specific information.



Detection of Human and Mouse PPP3CA by Western Blot.

Samples: Whole cell lysate from HeLa (5, 15, and 50 µg), 293T (T; 50 µg), and mouse NIH3T3 (M; 50 µg) cells. *Antibody:* Affinity purified rabbit anti-PPP3CA antibody A300-907A-T used at 1:1000. *Detection:* Chemiluminescence with an exposure time of 3 minutes.