

PPP1CA Antibody

Rabbit Polyclonal

Antigen Affinity Purified

Protein ID NP_002699.1

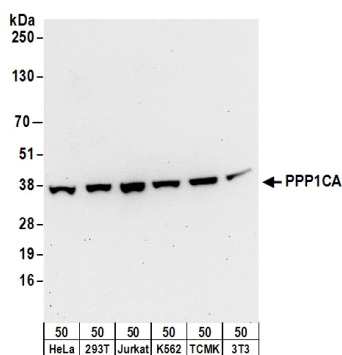
Catalog No. A300-904A-T

Gene ID 5499



APPLICATIONS	WB, IHC-P, IF, PLA
REACTIVITY TESTED	Human, Mouse
PRESUMED REACTIVITY	Based on 100% sequence identity, this antibody is predicted to react with Rat, Bovine, Dog, Horse, Rabbit, Guinea pig_10141, Pig, Panda, Orangutan, Rhesus Monkey, Gorilla, Chimpanzee, Tasmanian devil, African elephant, Chinese hamster and Gray short-tailed opossum.
ISOTYPE	IgG
AMOUNT	20 µl (2 blots)
STORAGE/SHELF LIFE	2 - 8° C / 1 year from date of receipt
PHYSICAL STATE	Liquid
BUFFER	Tris-buffered Saline with 0.1% BSA containing 0.09% Sodium Azide
ORIGIN	USA
PRODUCTION PROCEDURES	Antibody was affinity purified using an epitope specific to PPP1CA immobilized on solid support. The epitope recognized by A300-904A-T maps to a region between residue 280 and the C-terminus (residue 330) of human Protein Phosphatase 1, Catalytic Subunit, Alpha Isoform using the numbering given in entry NP_002699.1 (GeneID 5499).
APPLICATIONS	Centrifuge tube to remove product from lid. Optimal working dilutions should be determined experimentally by the investigator. Prepare working dilution immediately before use. Western Blot 1:1000 Immunoprecipitation Not recommended. Immunohistochemistry 1:200 to 1:800. Epitope retrieval with Tris-EDTA pH9.0 is recommended for FFPE tissue sections. Immunofluorescence 1:100 to 1:400 Proximity Ligation Assay The antibody contained within A300-904A-T has been qualified for use in PLA; however, we recommend using the alternative formulation of this antibody found as product A300-904A.
APPLICATION NOTES	Validation by IP/Western Blot was performed using a 4-20% SDS-PAGE gel and ReliaBLOT® Reagents (Cat. No. WB120).
ADDITIONAL INFO	http://www.bethyl.com/product/A300-904A-T Use the link above to view SDS, a current list of citations, and other product specific information.

PPP1CA Antibody: A300-904A-T



Detection of Human and Mouse PPP1CA by Western Blot.

Samples: Whole cell lysate (50 μ g) from HeLa, 293T, Jurkat, K562, mouse TCMK-1, and mouse NIH3T3 cells. *Antibody:* Affinity purified rabbit anti-PPP1CA antibody A300-904A-T used at 1:1000. *Detection:* Chemiluminescence with an exposure time of 30 seconds.