

PP2A Antibody

Rabbit Polyclonal

Antigen Affinity Purified

Catalog No. A300-732A-T

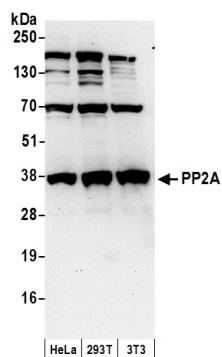
Protein ID NP_004147.1

Gene ID 5516



APPLICATIONS	WB, IP
REACTIVITY TESTED	Human, Mouse
PRESUMED REACTIVITY	Based on 100% sequence identity, this antibody is predicted to react with Rat, D. melanogaster, Zebrafish, X. laevis, X. tropicalis, Chicken, Turkey, Bovine, Dog, Rabbit, Guinea pig_10141, Pig, Panda, Orangutan, Rhesus Monkey, Gorilla, Chimpanzee, Brown alga_2880 and Spotted green pufferfish.
ISOTYPE	IgG
AMOUNT	20 µl (2 blots)
STORAGE/SHELF LIFE	2 - 8° C / 1 year from date of receipt
PHYSICAL STATE	Liquid
BUFFER	Tris-buffered Saline with 0.1% BSA containing 0.09% Sodium Azide
ORIGIN	USA
PRODUCTION PROCEDURES	Antibody was affinity purified using an epitope specific to PP2A immobilized on solid support. The epitope recognized by A300-732A-T maps to a region between residue 260 and the C-terminus (residue 309) of human Protein Phosphatase 2A (PPP2CB, Protein Phosphatase 2, Catalytic Subunit, Beta isoform) using the numbering given in entry NP_004147.1 (GeneID 5516). The region is identical to that of PPP2CA (NP_002706.1; GeneID: 5515)
APPLICATIONS	Centrifuge tube to remove product from lid. Optimal working dilutions should be determined experimentally by the investigator. Prepare working dilution immediately before use. Western Blot 1:1000 Immunoprecipitation The antibody contained within A300-732A-T has been qualified for use in immunoprecipitation; however, we recommend using the alternative formulation of this antibody found as product A300-732A.
APPLICATION NOTES	Validation by IP/Western Blot was performed using a 4-20% SDS-PAGE gel and ReliaBLOT® Reagents (Cat. No. WB120).
ADDITIONAL INFO	http://www.bethyl.com/product/A300-732A-T Use the link above to view SDS, a current list of citations, and other product specific information.

PP2A Antibody: A300-732A-T



Detection of Human and Mouse PP2A by Western Blot.

Samples: Whole cell lysate (50 μ g) from HeLa, 293T, and mouse NIH3T3 cells prepared using NETN lysis buffer. *Antibody:* Affinity purified rabbit anti-PP2A antibody A300-732A-T (lot A300-732A-T-2) used for WB at 1:1000. *Detection:* Chemiluminescence with an exposure time of 30 seconds.