

HDAC1 Antibody

Rabbit Polyclonal

Antigen Affinity Purified

Protein ID NP_004955.2

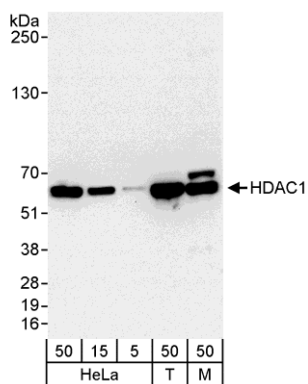
Catalog No. A300-713A-T

Gene ID 3065



APPLICATIONS	WB, IP, IHC-P, IF, PLA
REACTIVITY TESTED	Human, Mouse
PRESUMED REACTIVITY	Based on 100% sequence identity, this antibody is predicted to react with Bovine, Horse, Rabbit, Pig, Panda, Orangutan, Rhesus Monkey, Gorilla, Chimpanzee, White-tufted-ear marmoset, European domestic ferret, African elephant, Chinese hamster and Small-eared galago.
ISOTYPE	IgG
AMOUNT	20 µl (2 blots)
STORAGE/SHELF LIFE	2 - 8° C / 1 year from date of receipt
PHYSICAL STATE	Liquid
BUFFER	Tris-buffered Saline with 0.1% BSA containing 0.09% Sodium Azide
ORIGIN	USA
PRODUCTION PROCEDURES	Antibody was affinity purified using an epitope specific to HDAC1 immobilized on solid support. The epitope recognized by A300-713A-T maps to region between residue 425 and the C-terminus (residue 482) of human Histone Deacetylase 1 using the numbering given in entry NP_004955.2 (GeneID 3065).
APPLICATIONS	Centrifuge tube to remove product from lid. Optimal working dilutions should be determined experimentally by the investigator. Prepare working dilution immediately before use. Western Blot 1:1000 Immunoprecipitation The antibody contained within A300-713A-T has been qualified for use in immunoprecipitation; however, we recommend using the alternative formulation of this antibody found as product A300-713A. Immunohistochemistry 1:40 to 1:200. Epitope retrieval with citrate buffer pH6.0 is recommended for FFPE tissue sections. Immunofluorescence 1:20 to 1:100 Proximity Ligation Assay The antibody contained within A300-713A-T has been qualified for use in PLA; however, we recommend using the alternative formulation of this antibody found as product A300-713A.
APPLICATION NOTES	Validation by IP/Western Blot was performed using a 4-20% SDS-PAGE gel and ReliaBLOT® Reagents (Cat. No. WB120).
ADDITIONAL INFO	http://www.bethyl.com/product/A300-713A-T Use the link above to view SDS, a current list of citations, and other product specific information.

HDAC1 Antibody: A300-713A-T



Detection of Human and Mouse HDAC1 by Western Blot.

Samples: Whole cell lysate from HeLa (5, 15, and 50 μ g), 293T (T; 50 μ g), and mouse NIH3T3 (M; 50 μ g) cells. *Antibody:* Affinity purified rabbit anti-HDAC1 antibody A300-713A-T used at 1:1000. *Detection:* Chemiluminescence with an exposure time of 30 seconds.