

# HDAC2 Antibody

Rabbit Polyclonal

Antigen Affinity Purified

Protein ID NP\_001518.1

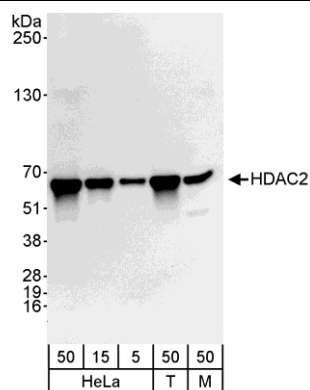
Catalog No. A300-705A-T

Gene ID 3066



<b>APPLICATIONS</b>	WB, IP, IHC-P, IF, ChIP-Seq
<b>REACTIVITY TESTED</b>	Human, Mouse
<b>PRESUMED REACTIVITY</b>	Based on 100% sequence identity, this antibody is predicted to react with Orangutan, Rhesus Monkey, Gorilla, Chimpanzee, Tasmanian devil, White-tufted-ear marmoset and Northern white-cheeked gibbon.
<b>ISOTYPE</b>	IgG
<b>AMOUNT</b>	20 µl (2 blots)
<b>STORAGE/SHELF LIFE</b>	2 - 8° C / 1 year from date of receipt
<b>PHYSICAL STATE</b>	Liquid
<b>BUFFER</b>	Tris-buffered Saline with 0.1% BSA containing 0.09% Sodium Azide
<b>ORIGIN</b>	USA
<b>PRODUCTION PROCEDURES</b>	Antibody was affinity purified using an epitope specific to HDAC2 immobilized on solid support.  The epitope recognized by A300-705A-T maps to a region between residue 425 and the C-terminus (residue 488) of human Histone Deacetylase 2 using the numbering given in entry NP_001518.1 (GeneID 3066).
<b>APPLICATIONS</b>	Centrifuge tube to remove product from lid. Optimal working dilutions should be determined experimentally by the investigator. Prepare working dilution immediately before use.  Western Blot 1:1000  Immunoprecipitation The antibody contained within A300-705A-T has been qualified for use in immunoprecipitation; however, we recommend using the alternative formulation of this antibody found as product A300-705A.  Immunohistochemistry 1:40 to 1:200. Epitope retrieval with citrate buffer pH6.0 is recommended for FFPE tissue sections.  Immunofluorescence 1:20 to 1:100
<b>APPLICATION NOTES</b>	Validation by IP/Western Blot was performed using a 4-20% SDS-PAGE gel and ReliaBLOT® Reagents (Cat. No. WB120).
<b>ADDITIONAL INFO</b>	<a href="http://www.bethyl.com/product/A300-705A-T">http://www.bethyl.com/product/A300-705A-T</a>  Use the link above to view SDS, a current list of citations, and other product specific information.

## HDAC2 Antibody: A300-705A-T



### Detection of Human and Mouse HDAC2 by Western Blot.

*Samples:* Whole cell lysate from HeLa (5, 15, and 50 µg), 293T (T; 50 µg), and mouse NIH3T3 (M; 50 µg) cells. *Antibody:* Affinity purified rabbit anti-HDAC2 antibody A300-705A-T used at 1:1000. *Detection:* Chemiluminescence with an exposure time of 30 seconds.