

SKIV2L2 Antibody

Rabbit Polyclonal

Antigen Affinity Purified

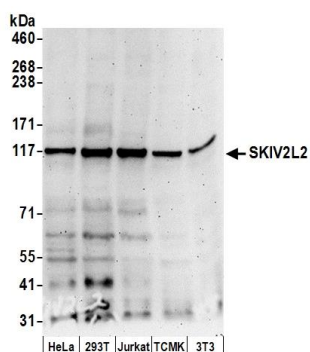
Catalog No. A300-614A-T

Protein ID NP_056175.2

Gene ID 23517



APPLICATIONS	WB, IHC-P, ICC, IF
REACTIVITY TESTED	Human, Mouse
ISOTYPE	IgG
AMOUNT	20 µl (2 blots)
STORAGE/SHELF LIFE	2 - 8° C / 1 year from date of receipt
PHYSICAL STATE	Liquid
BUFFER	Tris-buffered Saline with 0.1% BSA containing 0.09% Sodium Azide
ORIGIN	USA
PRODUCTION PROCEDURES	Antibody was affinity purified using an epitope specific to SKIV2L2 immobilized on solid support. The epitope recognized by A300-614A-T maps to a region between residues 100 and 150 of human SuperKiller Viralicidic Activity 2-Like 2 using the numbering given in entry NP_056175.2 (GeneID 23517).
APPLICATIONS	Centrifuge tube to remove product from lid. Optimal working dilutions should be determined experimentally by the investigator. Prepare working dilution immediately before use. Western Blot 1:1000 Immunoprecipitation Not recommended. Immunohistochemistry 1:10 to 1:50. Epitope retrieval with Tris-EDTA pH9.0 is recommended for FFPE tissue sections. Immunocytochemistry 1:10 to 1:50. Epitope retrieval with Tris-EDTA pH9.0 is recommended for FFPE cells. Immunofluorescence 1:5 to 1:25
APPLICATION NOTES	Validation by IP/Western Blot was performed using a 4-8% SDS-PAGE gel and ReliaBLOT® Reagents (Cat. No. WB120).
ADDITIONAL INFO	http://www.bethyl.com/product/A300-614A-T Use the link above to view SDS, a current list of citations, and other product specific information.



Detection of Human and Mouse SKIV2L2 by Western Blot.

Samples: Whole cell lysate (50 µg) from HeLa, 293T, Jurkat, mouse TCMK-1, and mouse NIH3T3 cells prepared using NETN lysis buffer. **Antibodies:** Affinity purified rabbit anti-SKIV2L2 antibody A300-614A-T (lot A300-614A-T-2) used for WB at 1:1000. **Detection:** Chemiluminescence with an exposure time of 3 minutes.