

CAP-D3 Antibody

Rabbit Polyclonal

Antigen Affinity Purified

Catalog No. A300-604A-T

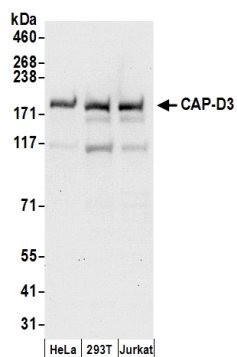
Protein ID NP_056076.1

Gene ID 23310



APPLICATIONS	WB, IP
REACTIVITY TESTED	Human
PRESUMED REACTIVITY	Based on 100% sequence identity, this antibody is predicted to react with Rhesus Monkey, Gorilla, Chimpanzee, Crab-eating macaque and Northern white-cheeked gibbon.
ISOTYPE	IgG
AMOUNT	20 µl (2 blots)
STORAGE/SHELF LIFE	2 - 8° C / 1 year from date of receipt
PHYSICAL STATE	Liquid
BUFFER	Tris-buffered Saline with 0.1% BSA containing 0.09% Sodium Azide
ORIGIN	USA
PRODUCTION PROCEDURES	Antibody was affinity purified using an epitope specific to CAP-D3 immobilized on solid support. The epitope recognized by A300-604A-T maps to a region between residue 1450 and the C-terminus (residue 1507) of human Chromosome-Associated Protein D3 using the numbering given in entry NP_056076.1 (GeneID 23310).
APPLICATIONS	Centrifuge tube to remove product from lid. Optimal working dilutions should be determined experimentally by the investigator. Prepare working dilution immediately before use. Western Blot 1:1000 Immunoprecipitation The antibody contained within A300-604A-T has been qualified for use in immunoprecipitation; however, we recommend using the alternative formulation of this antibody found as product A300-604A.
APPLICATION NOTES	Validation by IP/Western Blot was performed using a 4-8% SDS-PAGE gel and ReliaBLOT® Reagents (Cat. No. WB120).
ADDITIONAL INFO	http://www.bethyl.com/product/A300-604A-T Use the link above to view SDS, a current list of citations, and other product specific information.

CAP-D3 Antibody: A300-604A-T



Detection of Human CAP-D3 by Western Blot. *Samples:* Whole cell lysate (50 µg) from HeLa, 293T, and Jurkat cells prepared using NETN lysis buffer. *Antibodies:* Affinity purified rabbit anti-CAP-D3 antibody A300-604A-T (lot A300-604A-T-3) used for WB at 1:1000. *Detection:* Chemiluminescence with an exposure time of 30 seconds.