

# CAP-H Antibody

Rabbit Polyclonal

Antigen Affinity Purified

Catalog No. A300-603A-T

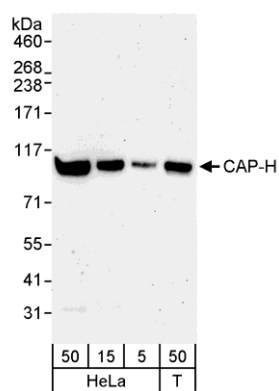
Protein ID NP\_056156.2

Gene ID 23397



<b>APPLICATIONS</b>	WB, IP
<b>REACTIVITY TESTED</b>	Human
<b>PRESUMED REACTIVITY</b>	Based on 100% sequence identity, this antibody is predicted to react with Rhesus Monkey, Gorilla, Chimpanzee, White-tufted-ear marmoset, Crab-eating macaque, Thirteen-lined ground squirrel, Little brown bat and Northern white-cheeked gibbon.
<b>ISOTYPE</b>	IgG
<b>AMOUNT</b>	20 µl (2 blots)
<b>STORAGE/SHELF LIFE</b>	2 - 8° C / 1 year from date of receipt
<b>PHYSICAL STATE</b>	Liquid
<b>BUFFER</b>	Tris-buffered Saline with 0.1% BSA containing 0.09% Sodium Azide
<b>ORIGIN</b>	USA
<b>PRODUCTION PROCEDURES</b>	Antibody was affinity purified using an epitope specific to CAP-H immobilized on solid support.  The epitope recognized by A300-603A-T maps to a region between residue 700 and the C-terminus (residue 741) of human Chromosome Associated Protein H (Barren homolog BRRN1) using the numbering given in entry NP_056156.2 (GeneID 23397).
<b>APPLICATIONS</b>	Centrifuge tube to remove product from lid. Optimal working dilutions should be determined experimentally by the investigator. Prepare working dilution immediately before use.  Western Blot 1:1000  Immunoprecipitation The antibody contained within A300-603A-T has been qualified for use in immunoprecipitation; however, we recommend using the alternative formulation of this antibody found as product A300-603A.
<b>APPLICATION NOTES</b>	Validation by IP/Western Blot was performed using a 4-8% SDS-PAGE gel and ReliaBLOT® Reagents (Cat. No. WB120).
<b>ADDITIONAL INFO</b>	<a href="http://www.bethyl.com/product/A300-603A-T">http://www.bethyl.com/product/A300-603A-T</a>  Use the link above to view SDS, a current list of citations, and other product specific information.

## CAP-H Antibody: A300-603A-T



**Detection of Human CAP-H by Western Blot.** *Samples:* Whole cell lysate from HeLa (5, 15, and 50 µg) and 293T (50 µg) cells. *Antibody:* Affinity purified rabbit anti-CAP-H antibody A300-603A-T used at 1:1000. *Detection:* Chemiluminescence with an exposure time of 3 minutes.