

# NMI Antibody

Rabbit Polyclonal

Antigen Affinity Purified

Catalog No. A300-551A-T

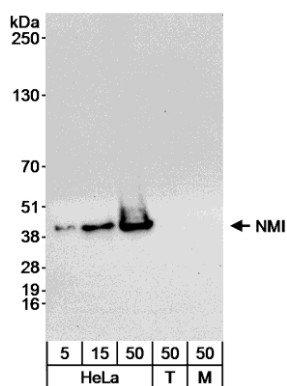
Protein ID NP\_004679.1

Gene ID 9111



<b>APPLICATIONS</b>	WB, IHC-P, IF
<b>REACTIVITY TESTED</b>	Human
<b>PRESUMED REACTIVITY</b>	Based on 100% sequence identity, this antibody is predicted to react with Orangutan, Gorilla, Chimpanzee, White-tufted-ear marmoset and Northern white-cheeked gibbon.
<b>ISOTYPE</b>	IgG
<b>AMOUNT</b>	20 µl (2 blots)
<b>STORAGE/SHELF LIFE</b>	2 - 8° C / 1 year from date of receipt
<b>PHYSICAL STATE</b>	Liquid
<b>BUFFER</b>	Tris-buffered Saline with 0.1% BSA containing 0.09% Sodium Azide
<b>ORIGIN</b>	USA
<b>PRODUCTION PROCEDURES</b>	Antibody was affinity purified using an epitope specific to NMI immobilized on solid support.  The epitope recognized by A300-551A-T maps to a region between residue 250 and the C-terminus (residue 307) of human N-myc and STAT interactor using the numbering given in entry NP_004679.1 (GeneID 9111).
<b>APPLICATIONS</b>	Centrifuge tube to remove product from lid. Optimal working dilutions should be determined experimentally by the investigator. Prepare working dilution immediately before use.  Western Blot                      1:1000 Immunoprecipitation            Not recommended. Immunohistochemistry        1:100 to 1:400. Epitope retrieval with citrate buffer pH6.0 is recommended for FFPE tissue sections. Immunofluorescence        1:50 to 1:200
<b>ADDITIONAL INFO</b>	<a href="http://www.bethyl.com/product/A300-551A-T">http://www.bethyl.com/product/A300-551A-T</a>  Use the link above to view SDS, a current list of citations, and other product specific information.

## NMI Antibody: A300-551A-T



**Detection of Human NMI by Western Blot.** *Samples:* Whole cell lysate from HeLa (5, 15, and 50 µg), 293T (T; 50 µg) and NIH3T3 (M; 50 µg) cells. *Antibody:* Affinity purified rabbit anti-NMI antibody A300-551A-T used at 1:1000. *Detection:* Chemiluminescence with an exposure time of 30 seconds.