

# DNA-PKcs Antibody

Rabbit Polyclonal

Antigen Affinity Purified

Catalog No. A300-518A-T

Protein ID NP\_008835.5

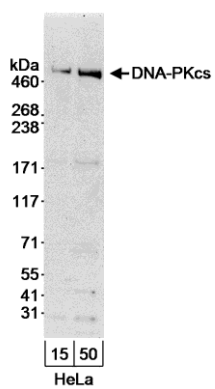
Gene ID 5591



<b>APPLICATIONS</b>	WB, IP, IHC-P, IF
<b>REACTIVITY TESTED</b>	Human
<b>PRESUMED REACTIVITY</b>	Based on 100% sequence identity, this antibody is predicted to react with Rhesus Monkey, Crab-eating macaque and Northern white-cheeked gibbon.
<b>ISOTYPE</b>	IgG
<b>AMOUNT</b>	20 µl (2 blots)
<b>STORAGE/SHELF LIFE</b>	2 - 8° C / 1 year from date of receipt
<b>PHYSICAL STATE</b>	Liquid
<b>BUFFER</b>	Tris-buffered Saline with 0.1% BSA containing 0.09% Sodium Azide
<b>ORIGIN</b>	USA
<b>PRODUCTION PROCEDURES</b>	Antibody was affinity purified using an epitope specific to DNA-PKcs immobilized on solid support.  The epitope recognized by A300-518A-T maps to a region between residues 2100 and 2150 of human DNA-Dependent Protein Kinase, catalytic subunit using the numbering given in entry NP_008835.5 (GeneID 5591).
<b>APPLICATIONS</b>	Centrifuge tube to remove product from lid. Optimal working dilutions should be determined experimentally by the investigator. Prepare working dilution immediately before use.  Western Blot                      1:1000  Immunoprecipitation            The antibody contained within A300-518A-T has been qualified for use in immunoprecipitation; however, we recommend using the alternative formulation of this antibody found as product A300-518A.  Immunohistochemistry        1:50 to 1:250. Epitope retrieval with citrate buffer pH6.0 is recommended for FFPE tissue sections.  Immunofluorescence        1:25 to 1:250
<b>ADDITIONAL INFO</b>	<a href="http://www.bethyl.com/product/A300-518A-T">http://www.bethyl.com/product/A300-518A-T</a>  Use the link above to view SDS, a current list of citations, and other product specific information.

## DNA-PKcs Antibody: A300-518A-T

---



**Detection of Human DNA-PKcs by Western Blot.** *Samples:* Whole cell lysate (15 and 50  $\mu$ g) from HeLa cells. *Antibody:* Affinity purified rabbit anti-DNA-PKcs antibody A300-518A-T used at 1:1000. *Detection:* Chemiluminescence with an exposure time of 3 minutes.