

Cytoskeletal Actin Antibody

Rabbit Polyclonal

Antigen Affinity Purified

Protein ID P60709

Catalog No. A300-491A-T

Gene ID 60



APPLICATIONS	WB, IHC-P, IF
REACTIVITY TESTED	Human, Mouse
PRESUMED REACTIVITY	Based on 100% sequence identity, this antibody is predicted to react with Rat, X. tropicalis, Chicken, Turkey, Sheep, Bovine, Dog, Horse, Rabbit, Guinea pig_10141, Pig, Panda, Orangutan, Rhesus Monkey, Gorilla, Chimpanzee, Medaka fish, Australian taipan, Emu, Duckbill platypus and King baboon spider.
ISOTYPE	IgG
AMOUNT	20 µl (2 blots)
STORAGE/SHELF LIFE	2 - 8° C / 1 year from date of receipt
PHYSICAL STATE	Liquid
BUFFER	Tris-buffered Saline with 0.1% BSA containing 0.09% Sodium Azide
ORIGIN	USA
PRODUCTION PROCEDURES	Antibody was affinity purified using an epitope specific to Cytoskeletal Actin immobilized on solid support.

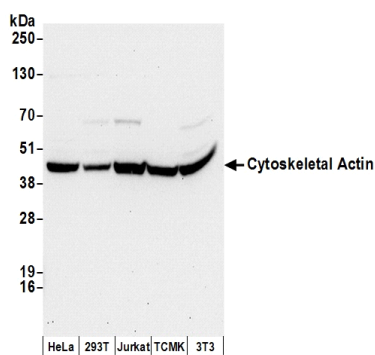
The epitope recognized by A300-491A-T maps to the N-terminus of human Beta-actin using the numbering given in Swiss-Prot entry P60709 (GeneID 60). The N-terminus of Beta-Actin is highly conserved with Gamma-Actin and preliminary indications are that A300-491A-T also recognizes Gamma-Actin (GeneID 71).

APPLICATIONS	Centrifuge tube to remove product from lid. Optimal working dilutions should be determined experimentally by the investigator. Prepare working dilution immediately before use.
Western Blot	1:1000
Immunoprecipitation	Not recommended.
Immunohistochemistry	1:25 to 1:100. Epitope retrieval may not be necessary. In some instances epitope retrieval with citrate buffer pH6.0 may enhance staining for FFPE tissue sections.
Immunofluorescence	1:10 to 1:50

ADDITIONAL INFO <http://www.bethyl.com/product/A300-491A-T>

Use the link above to view SDS, a current list of citations, and other product specific information.

Cytoskeletal Actin Antibody: A300-491A-T



Detection of Human and Mouse Cytoskeletal Actin by Western Blot. *Samples:* Whole cell lysate (50 μ g) from HeLa, 293T, Jurkat, mouse TCMK-1, and mouse NIH3T3 cells prepared using NETN lysis buffer. *Antibodies:* Affinity purified rabbit anti-Cytoskeletal Actin antibody A300-491A-T (lot A300-491A-T-8) used for WB at 1:1000. *Detection:* Chemiluminescence with an exposure time of 30 seconds.