

DDB1 Antibody

Rabbit Polyclonal

Antigen Affinity Purified

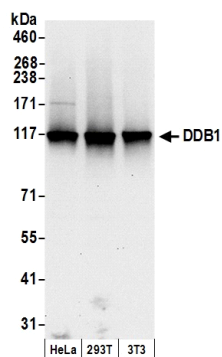
Protein ID Q13289

Catalog No. A300-462A-T

Gene ID 1642



| | |
|------------------------------|---|
| APPLICATIONS | WB, IP, IHC-P, IF, PLA |
| REACTIVITY TESTED | Human, Mouse |
| PRESUMED REACTIVITY | Based on 100% sequence identity, this antibody is predicted to react with Rat, <i>X. laevis</i> , <i>X. tropicalis</i> , Bovine, Dog, Horse, Rabbit, Guinea pig_10141, Pig, Panda, Orangutan, Rhesus Monkey, Gorilla, Chimpanzee, Tasmanian devil, White-tufted-ear marmoset, Green monkey and Northern white-cheeked gibbon. |
| ISOTYPE | IgG |
| AMOUNT | 20 µl (2 blots) |
| STORAGE/SHELF LIFE | 2 - 8° C / 1 year from date of receipt |
| PHYSICAL STATE | Liquid |
| BUFFER | Tris-buffered Saline with 0.1% BSA containing 0.09% Sodium Azide |
| ORIGIN | USA |
| PRODUCTION PROCEDURES | Antibody was affinity purified using an epitope specific to DDB1 immobilized on solid support. The epitope recognized by A300-462A-T maps to a region between residue 1100 and the C-terminus (residue 1140) of human damage-specific DNA binding protein 1 using the numbering given in TrEMBL entry Q13289 (GeneID 1642). |
| APPLICATIONS | Centrifuge tube to remove product from lid. Optimal working dilutions should be determined experimentally by the investigator. Prepare working dilution immediately before use. Western Blot 1:1000 Immunoprecipitation The antibody contained within A300-462A-T has been qualified for use in immunoprecipitation; however, we recommend using the alternative formulation of this antibody found as product A300-462A. Immunohistochemistry 1:250 to 1:1000. Epitope retrieval with citrate buffer pH6.0 is recommended for FFPE tissue sections. Immunofluorescence 1:125 to 1:1000 Proximity Ligation Assay The antibody contained within A300-462A-T has been qualified for use in PLA; however, we recommend using the alternative formulation of this antibody found as product A300-462A. |
| ADDITIONAL INFO | http://www.bethyl.com/product/A300-462A-T Use the link above to view SDS, a current list of citations, and other product specific information. |



Detection of Human and Mouse DDB1 by Western Blot.

Samples: Whole cell lysate (15 μ g) from HeLa, 293T, and mouse NIH3T3 cells prepared using NETN lysis buffer. *Antibody:* Affinity purified rabbit anti-DDB1 antibody A300-462A-T (lot A300-462A-T-2) used for WB at 1:1000. *Detection:* Chemiluminescence with an exposure time of 10 seconds.