

Nanog Antibody

Rabbit Polyclonal

Antigen Affinity Purified

Catalog No. A300-398A-T

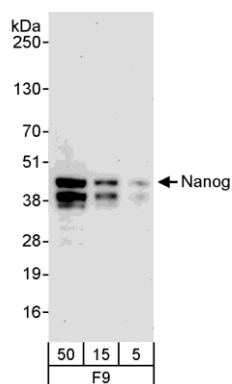
Protein ID Q80Z64

Gene ID 71950



APPLICATIONS	WB, IP
REACTIVITY TESTED	Mouse
PRESUMED REACTIVITY	Based on 100% sequence identity, this antibody is predicted to react with Southeastern Asian house mouse, Western Mediterranean mouse and Japanese house mouse.
ISOTYPE	IgG
AMOUNT	20 µl (2 blots)
STORAGE/SHELF LIFE	2 - 8° C / 1 year from date of receipt
PHYSICAL STATE	Liquid
BUFFER	Tris-buffered Saline with 0.1% BSA containing 0.09% Sodium Azide
ORIGIN	USA
PRODUCTION PROCEDURES	Antibody was affinity purified using an epitope specific to Nanog immobilized on solid support. The epitope recognized by A300-398A-T maps to a region between residue 250 and the C-terminus (residue 305) of mouse Nanog homeobox using the numbering given in TrEMBL entry Q80Z64 (GeneID 71950).
APPLICATIONS	Centrifuge tube to remove product from lid. Optimal working dilutions should be determined experimentally by the investigator. Prepare working dilution immediately before use. Western Blot 1:1000 Immunoprecipitation The antibody contained within A300-398A-T has been qualified for use in immunoprecipitation; however, we recommend using the alternative formulation of this antibody found as product A300-398A.
APPLICATION NOTES	Validation by IP/Western Blot was performed using a 4-20% SDS-PAGE gel and ReliaBLOT® Reagents (Cat. No. WB120).
ADDITIONAL INFO	http://www.bethyl.com/product/A300-398A-T Use the link above to view SDS, a current list of citations, and other product specific information.

Nanog Antibody: A300-398A-T



Detection of Mouse Nanog by Western Blot. *Samples:* Whole cell lysate (5, 15, and 50 µg) from mouse F9 cells. *Antibody:* Affinity purified rabbit anti-Nanog antibody A300-398A-T used at 1:1000. *Detection:* Chemiluminescence with an exposure time of 30 seconds.