

Phospho HdmX/MDM4 (S403) Antibody

Rabbit Polyclonal

Antigen Affinity Purified

Catalog No. A300-392A

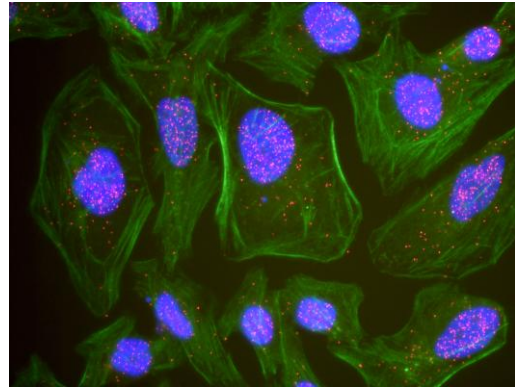
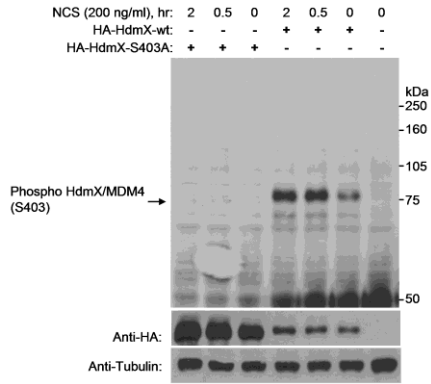
Protein ID NP_002384.2

Gene ID 4194



APPLICATIONS	WB, PLA
REACTIVITY TESTED	Human
PRESUMED REACTIVITY	Based on 100% sequence identity, this antibody is predicted to react with Bovine, Dog, Horse, Rabbit, Guinea pig_10141, Pig, Panda, Orangutan, Gorilla, Chimpanzee, White-tufted-ear marmoset, Chinese hamster, Thirteen-lined ground squirrel and Northern white-cheeked gibbon.
ISOTYPE	IgG
AMOUNT	0.1 ml at 1 mg/ml
STORAGE/SHELF LIFE	2 - 8° C / 1 year from date of receipt
PHYSICAL STATE	Liquid
BUFFER	Tris-citrate/phosphate buffer, pH 7 to 8 containing 0.09% Sodium Azide
ORIGIN	USA
PRODUCTION PROCEDURES	Antibody was affinity purified using an epitope specific to HdmX/MDM4 phosphorylated at Ser 403 immobilized on solid support. The epitope recognized by A300-392A maps to a region surrounding phosphorylated Ser 403 of human ortholog of mouse double minute 4 using the numbering given in entry NP_002384.2 (GeneID 4194). Immunoglobulin concentration was determined by extinction coefficient: absorbance at 280 nm of 1.4 equals 1.0 mg of IgG.
APPLICATIONS	Centrifuge tube to remove product from lid. Optimal working dilutions should be determined experimentally by the investigator. Prepare working dilution immediately before use. Western Blot 1:1,000 - 1:3,000. Detection of endogenous phospho HdmX/MDM4 will likely require immunoprecipitation of HdmX/MDM4 prior to blotting with A300-392A. Affinity purified rabbit anti-HdmX/MDM4 antibody A300-287A is recommended for IP. Proximity Ligation Assay 1:1,000 - 1:20,000
ADDITIONAL INFO	http://www.bethyl.com/product/A300-392A Use the link above to view a current list of citations and other product specific information.

Phospho HdmX/MDM4 (S403) Antibody: A300-392A



Detection of phospho HdmX/MDM4 (Ser 403) by Western Blot. *Samples:* Whole cell lysate (30 μ g/lane) from 293T cells that were mock transfected, or transfected with expression constructs for HA tagged wild-type HdmX/MDM4 or HA tagged HdmX/MDM4 (S403A) mutant. *Antibody:* Affinity purified rabbit anti-phospho HdmX/MDM4 antibody (Cat. No. A300-392A) used at 0.13 μ g/ml for WB. *Detection:* Chemiluminescence with an exposure time of 30 seconds.

This antibody is qualified for the Proximity Ligation Assay (PLA). PLA uses paired antibodies, so please refer to the PLA page of our website for specific imaging obtained by pairing this antibody with other qualified antibodies. The above image shows representative results for PLA using three color fluorescence, including DAPI stained nuclei (blue), phalloidin stained cytoplasmic F-actin (green), and PLA positive signal (red).

MATERIAL SAFETY DATA SHEET

CONTENTS

This product contains Rabbit immunoglobulin G (IgG) protein in Tris-citrate/phosphate buffer, pH 7 to 8 containing 0.09% Sodium Azide.

INGREDIENT DESCRIPTIONS

HAZARDOUS:

Sodium Azide (NaN₃): Azide forms explosive chemical compounds with lead and copper plumbing. Care must be taken to wash waste down drains with large volumes of water. LD50 oral mouse 27 mg/kg. Wash all affected areas with large volumes of water and if swallowed consult your physician immediately.