

Phospho HdmX/MDM4 (S403) Antibody

Rabbit Polyclonal

Antigen Affinity Purified

Protein ID NP_002384.2

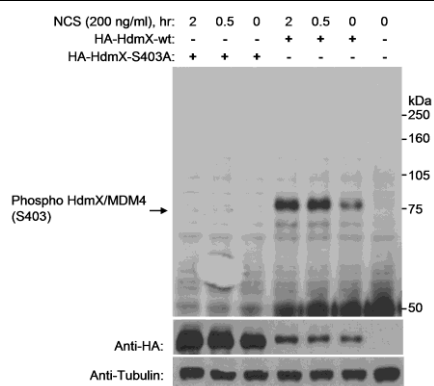
Catalog No. A300-392A-T

Gene ID 4194



APPLICATIONS	WB, PLA
REACTIVITY TESTED	Human
PRESUMED REACTIVITY	Based on 100% sequence identity, this antibody is predicted to react with Bovine, Dog, Horse, Rabbit, Guinea pig_10141, Pig, Panda, Orangutan, Gorilla, Chimpanzee, White-tufted-ear marmoset, Chinese hamster, Thirteen-lined ground squirrel and Northern white-cheeked gibbon.
ISOTYPE	IgG
AMOUNT	20 µl (2 blots)
STORAGE/SHELF LIFE	2 - 8° C / 1 year from date of receipt
PHYSICAL STATE	Liquid
BUFFER	Tris-buffered Saline with 0.1% BSA containing 0.09% Sodium Azide
ORIGIN	USA
PRODUCTION PROCEDURES	Antibody was affinity purified using an epitope specific to HdmX/MDM4 phosphorylated at Ser 403 immobilized on solid support. The epitope recognized by A300-392A-T maps to a region surrounding phosphorylated Ser 403 of human ortholog of mouse double minute 4 using the numbering given in entry NP_002384.2 (GeneID 4194).
APPLICATIONS	Centrifuge tube to remove product from lid. Optimal working dilutions should be determined experimentally by the investigator. Prepare working dilution immediately before use. Western Blot 1:1000 Proximity Ligation Assay The antibody contained within A300-392A-T has been qualified for use in PLA; however, we recommend using the alternative formulation of this antibody found as product A300-392A.
ADDITIONAL INFO	http://www.bethyl.com/product/A300-392A-T Use the link above to view SDS, a current list of citations, and other product specific information.

Phospho HdmX/MDM4 (S403) Antibody: A300-392A-T



Detection of phospho HdmX/MDM4 (Ser 403) by Western Blot. *Samples:* Whole cell lysate (30 µg/lane) from 293T cells that were mock transfected, or transfected with expression constructs for HA tagged wild-type HdmX/MDM4 or HA tagged HdmX/MDM4 (S403A) mutant. *Antibody:* Affinity purified rabbit anti-phospho HdmX/MDM4 antibody (Cat. No. A300-392A-T) used for WB at 1:1000. *Detection:* Chemiluminescence with an exposure time of 30 seconds.