

FUS Antibody

Rabbit Polyclonal

Antigen Affinity Purified

Protein ID P35637

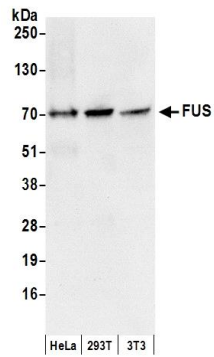
Catalog No. A300-302A-T

Gene ID 2521



APPLICATIONS	WB, IP, IHC-P, IF
REACTIVITY TESTED	Human, Mouse
PRESUMED REACTIVITY	Based on 100% sequence identity, this antibody is predicted to react with Rat, Bovine, Dog, Rabbit, Pig, Panda, Orangutan, Rhesus Monkey, Gorilla, Chimpanzee, Tasmanian devil, White-tufted-ear marmoset, African elephant, Thirteen-lined ground squirrel, Little brown bat and Northern white-cheeked gibbon.
ISOTYPE	IgG
AMOUNT	20 µl (2 blots)
STORAGE/SHELF LIFE	2 - 8° C / 1 year from date of receipt
PHYSICAL STATE	Liquid
BUFFER	Tris-buffered Saline with 0.1% BSA containing 0.09% Sodium Azide
ORIGIN	USA
PRODUCTION PROCEDURES	Antibody was affinity purified using an epitope specific to FUS immobilized on solid support. The epitope recognized by A300-302A-T maps to a region between residues 1 and 50 of human fusion (involved in t(12;16) in malignant liposarcoma) using the numbering given in SwissProt entry P35637 (GeneID 2521).
APPLICATIONS	Centrifuge tube to remove product from lid. Optimal working dilutions should be determined experimentally by the investigator. Prepare working dilution immediately before use. Western Blot 1:1000 Immunoprecipitation The antibody contained within A300-302A-T has been qualified for use in immunoprecipitation; however, we recommend using the alternative formulation of this antibody found as product A300-302A. Immunohistochemistry 1:50 to 1:200. Epitope retrieval with citrate buffer pH6.0 is recommended for FFPE tissue sections. Immunofluorescence 1:50 to 1:200
ADDITIONAL INFO	http://www.bethyl.com/product/A300-302A-T Use the link above to view SDS, a current list of citations, and other product specific information.

FUS Antibody: A300-302A-T



Detection of Human and Mouse FUS by Western Blot.

Samples: Whole cell lysate (50 μ g) from HeLa, 293T, and mouse NIH3T3 cells prepared using NETN lysis buffer. *Antibody:* Affinity purified rabbit anti-FUS antibody A300-302A-T (lot A300-302A-T-3) used for WB at 1;1000. *Detection:* Chemiluminescence with an exposure time of 3 seconds.