

# HdmX/MDM4 Antibody

Rabbit Polyclonal

Antigen Affinity Purified

Catalog No. A300-287A-T

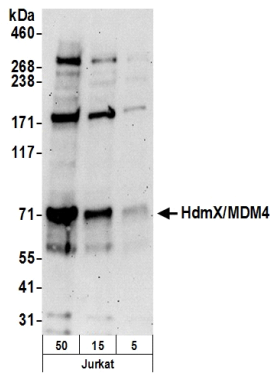
Protein ID NP\_002384.2

Gene ID 4194

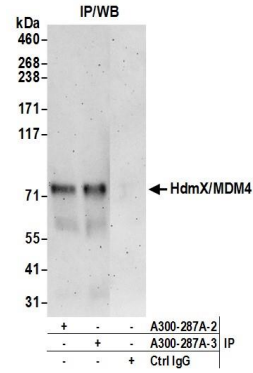


<b>APPLICATIONS</b>	WB, IP
<b>REACTIVITY TESTED</b>	Human
<b>PRESUMED REACTIVITY</b>	Based on 100% sequence identity, this antibody is predicted to react with Orangutan, Rhesus Monkey, Gorilla, Crab-eating macaque and Northern white-cheeked gibbon.
<b>ISOTYPE</b>	IgG
<b>AMOUNT</b>	10 µl at 1 mg/ml
<b>STORAGE/SHELF LIFE</b>	2 - 8° C / 1 year from date of receipt
<b>PHYSICAL STATE</b>	Liquid
<b>BUFFER</b>	Tris-citrate/phosphate buffer, pH 7 to 8 containing 0.09% Sodium Azide
<b>ORIGIN</b>	USA
<b>PRODUCTION PROCEDURES</b>	<p>Antibody was affinity purified using an epitope specific to HdmX/MDM4 immobilized on solid support.</p> <p>The epitope recognized by A300-287A-T maps to a region between residues 125 and 175 of human ortholog of mouse double minute 4 using the numbering given in entry NP_002384.2 (GeneID 4194).</p> <p>Immunoglobulin concentration was determined by extinction coefficient: absorbance at 280 nm of 1.4 equals 1.0 mg of IgG.</p>
<b>APPLICATIONS</b>	<p>Centrifuge tube to remove product from lid. Optimal working dilutions should be determined experimentally by the investigator. Prepare working dilution immediately before use.</p> <p>Western Blot 1:1,000 - 1:5,000</p> <p>Immunoprecipitation The antibody contained within A300-287A-T has been qualified for use in immunoprecipitation; however, we recommend using the alternative formulation of this antibody found as product A300-287A.</p>
<b>APPLICATION NOTES</b>	Validation by IP/Western Blot was performed using a 4-8% SDS-PAGE gel and ReliaBLOT® Reagents (Cat. No. WB120).
<b>ADDITIONAL INFO</b>	<p><a href="http://www.bethyl.com/product/A300-287A-T">http://www.bethyl.com/product/A300-287A-T</a></p> <p>Use the link above to view SDS, a current list of citations, and other product specific information.</p>

# HdmX/MDM4 Antibody: A300-287A-T



**Detection of Human HdmX/MDM4 by Western Blot.** *Samples:* Whole cell lysate from Jurkat cells (50, 15, 5  $\mu$ g) prepared using NETN lysis buffer. *Antibodies:* Affinity purified rabbit anti-HdmX/MDM4 antibody A300-287A-T (lot A300-287A-T-3) used for WB at 1  $\mu$ g/ml. *Detection:* Chemiluminescence with an exposure time of 3 minutes.



**Detection of Human HdmX/MDM4 by Western Blot of Immunoprecipitates.** *Samples:* Whole cell lysate (0.5 or 1.0 mg per IP reaction; 20% of IP loaded) from Jurkat cells prepared using NETN lysis buffer. *Antibodies:* Affinity purified rabbit anti-HdmX/MDM4 antibody A300-287A-T (lot A300-287A-T-3) used for IP at 6  $\mu$ g per reaction. HdmX/MDM4 was also immunoprecipitated by a previous lot of this antibody (lot A300-287A-T-2). For blotting immunoprecipitated HdmX/MDM4, A300-287A-T was used at 1  $\mu$ g/ml. *Detection:* Chemiluminescence with an exposure time of 3 minutes.