

HIF1-alpha Antibody

Rabbit Polyclonal

Antigen Affinity Purified

Protein ID Q16665

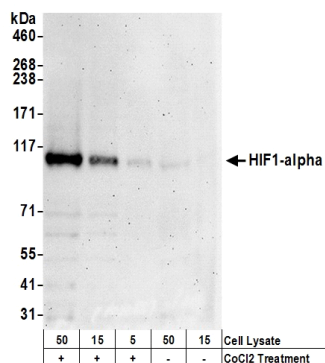
Catalog No. A300-286A-T

Gene ID 3091



APPLICATIONS	WB, IP, ICC, F, PLA
REACTIVITY TESTED	Human, Mouse
PRESUMED REACTIVITY	Based on 100% sequence identity, this antibody is predicted to react with Rat, Zebrafish, Chicken, Turkey, Goat, Bovine, Dog, Horse, Rabbit, Guinea pig_10141, Pig, Panda, Orangutan, Rhesus Monkey, Gorilla, Chimpanzee, Grass carp, Northern pike, Atlantic cod, Duckbill platypus and Gansu zokor.
ISOTYPE	IgG
AMOUNT	20 µl (2 blots)
STORAGE/SHELF LIFE	2 - 8° C / 1 year from date of receipt
PHYSICAL STATE	Liquid
BUFFER	Tris-buffered Saline with 0.1% BSA containing 0.09% Sodium Azide
ORIGIN	USA
PRODUCTION PROCEDURES	Antibody was affinity purified using an epitope specific to HIF1-alpha immobilized on solid support. The epitope recognized by A300-286A-T maps to a region between residues 775 and the C-terminus (residue 826) of human hypoxia-inducible factor 1, alpha subunit using the numbering given in Swiss-Prot entry Q16665 (GeneID 3091).
APPLICATIONS	Centrifuge tube to remove product from lid. Optimal working dilutions should be determined experimentally by the investigator. Prepare working dilution immediately before use. Western Blot 1:1000 Immunoprecipitation The antibody contained within A300-286A-T has been qualified for use in immunoprecipitation; however, we recommend using the alternative formulation of this antibody found as product A300-286A. Immunohistochemistry 1:50 to 1:200. Epitope retrieval with citrate buffer pH6.0 is recommended for FFPE tissue sections. Immunocytochemistry 1:5 to 1:20. Formaldehyde fixation is recommended. Permeabilization with Triton-X 100 is recommended for formaldehyde-fixed cells. Flow Cytometry The antibody contained within A300-286A-T has been qualified for use in flow cytometry; however, we recommend using the alternative formulation of this antibody found as product A300-286A. Proximity Ligation Assay The antibody contained within A300-286A-T has been qualified for use in PLA; however, we recommend using the alternative formulation of this antibody found as product A300-286A.
ADDITIONAL INFO	http://www.bethyl.com/product/A300-286A-T Use the link above to view SDS, a current list of citations, and other product specific information.

HIF1-alpha Antibody: A300-286A-T



Detection of Human HIF1 alpha by Western Blot. *Samples:* Whole cell lysate (5, 15, and 50 µg) from HeLa cells that were treated with cobalt chloride (+; 200 µM) or mock treated (-). *Antibody:* Affinity purified rabbit anti-HIF1 alpha antibody A300-286A-T used at 1:1000. *Detection:* Chemiluminescence with an exposure time of 30 seconds.