

RFC3 Antibody

Rabbit Polyclonal

Antigen Affinity Purified

Catalog No. A300-186A

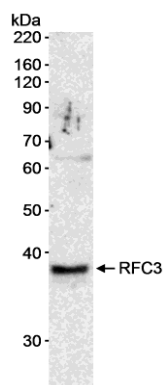
Protein ID P40938

Gene ID 5983

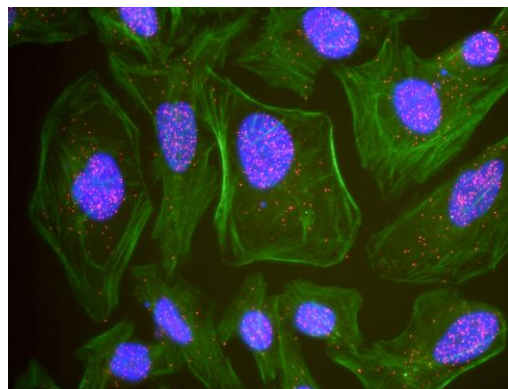


APPLICATIONS	WB, PLA
REACTIVITY TESTED	Human
PRESUMED REACTIVITY	Based on 100% sequence identity, this antibody is predicted to react with Rat, Bovine, Dog, Horse, Pig, Panda, Orangutan, Rhesus Monkey, Gorilla, Chimpanzee, White-tufted-ear marmoset, Crab-eating macaque, European domestic ferret, Chinese hamster, Naked mole rat and Northern white-cheeked gibbon.
ISOTYPE	IgG
AMOUNT	0.1 ml at 1 mg/ml
STORAGE/SHELF LIFE	2 - 8° C / 1 year from date of receipt
PHYSICAL STATE	Liquid
BUFFER	Tris-citrate/phosphate buffer, pH 7 to 8 containing 0.09% Sodium Azide
ORIGIN	USA
PRODUCTION PROCEDURES	<p>Antibody was affinity purified using an epitope specific to RFC3 immobilized on solid support.</p> <p>The epitope recognized by A300-186A maps to a region between residues 30 and 80 of human replication factor C (Activator 1) 3, 38kDa using the numbering given in SwissProt entry P40938 (GeneID 5983).</p> <p>Immunoglobulin concentration was determined by extinction coefficient: absorbance at 280 nm of 1.4 equals 1.0 mg of IgG.</p>
APPLICATIONS	<p>Centrifuge tube to remove product from lid. Optimal working dilutions should be determined experimentally by the investigator. Prepare working dilution immediately before use.</p> <p>Western Blot 1:2,500 - 1:10,000</p> <p>Proximity Ligation Assay 1:1,000 - 1:10,000</p>
ADDITIONAL INFO	<p>http://www.bethyl.com/product/A300-186A</p> <p>Use the link above to view a current list of citations and other product specific information.</p>

RFC3 Antibody: A300-186A



Detection of Human RFC3 by Western Blot. *Sample:* Nuclear extract (20 μ g) from HeLa cells. *Antibody:* Affinity purified rabbit anti-RFC3 antibody BL663 (Cat. No. A300-186A) used at 0.2 μ g/ml. *Detection:* Chemiluminescence with an exposure time of 15 minutes.



This antibody is qualified for the Proximity Ligation Assay (PLA). PLA uses paired antibodies, so please refer to the PLA page of our website for specific imaging obtained by pairing this antibody with other qualified antibodies. The above image shows representative results for PLA using three color fluorescence, including DAPI stained nuclei (blue), phalloidin stained cytoplasmic F-actin (green), and PLA positive signal (red).

MATERIAL SAFETY DATA SHEET

CONTENTS

This product contains Rabbit immunoglobulin G (IgG) protein in Tris-citrate/phosphate buffer, pH 7 to 8 containing 0.09% Sodium Azide.

INGREDIENT DESCRIPTIONS

HAZARDOUS:

Sodium Azide (NaN₃): Azide forms explosive chemical compounds with lead and copper plumbing. Care must be taken to wash waste down drains with large volumes of water. LD50 oral mouse 27 mg/kg. Wash all affected areas with large volumes of water and if swallowed consult your physician immediately.