

# Rad17 Antibody

Goat Polyclonal

Antigen Affinity Purified

Catalog No. A300-151A

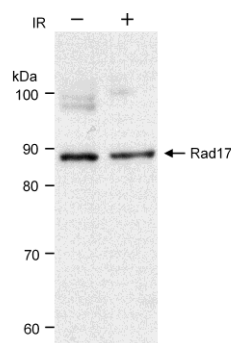
Protein ID NP\_002864.1

Gene ID 5884

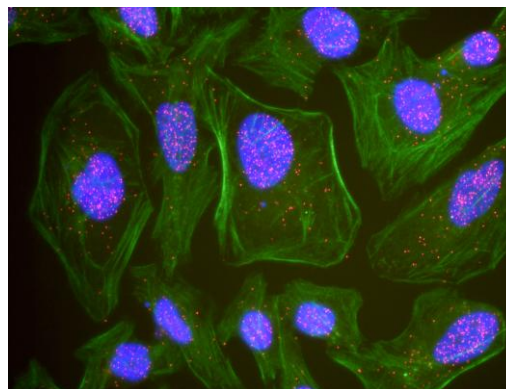


<b>APPLICATIONS</b>	WB, PLA
<b>REACTIVITY TESTED</b>	Human
<b>PRESUMED REACTIVITY</b>	Based on 100% sequence identity, this antibody is predicted to react with Gorilla and White-tufted-ear marmoset.
<b>ISOTYPE</b>	IgG
<b>AMOUNT</b>	0.1 ml at 1 mg/ml
<b>STORAGE/SHELF LIFE</b>	2 - 8° C / 1 year from date of receipt
<b>PHYSICAL STATE</b>	Liquid
<b>BUFFER</b>	Tris-citrate/phosphate buffer, pH 7 to 8 containing 0.1% Sodium Azide
<b>ORIGIN</b>	USA
<b>PRODUCTION PROCEDURES</b>	<p>Antibody was affinity purified using an epitope specific to Rad17 immobilized on solid support.</p> <p>The epitope recognized by A300-151A maps to a region between residues 325 and 375 of human Rad17 using the numbering given in entry NP_002864.1 (GeneID 5884).</p> <p>Immunoglobulin concentration was determined by extinction coefficient: absorbance at 280 nm of 1.4 equals 1.0 mg of IgG.</p>
<b>APPLICATIONS</b>	<p>Centrifuge tube to remove product from lid. Optimal working dilutions should be determined experimentally by the investigator. Prepare working dilution immediately before use.</p> <p>Western Blot                      1:2,500 - 1:15,000</p> <p>Proximity Ligation Assay      1:1,000 - 1:10,000</p>
<b>ADDITIONAL INFO</b>	<p><a href="http://www.bethyl.com/product/A300-151A">http://www.bethyl.com/product/A300-151A</a></p> <p>Use the link above to view a current list of citations and other product specific information.</p>

## Rad17 Antibody: A300-151A



**Detection of Human Rad17 by Western Blot.** *Samples:* Whole cell lysate (30  $\mu$ g) from HeLa cells before (-) or after (+) treatment with 10 Gy ionizing radiation. *Antibody:* Affinity purified goat anti-Rad17 (Cat. No. A300-151A) used at 0.1  $\mu$ g/ml. *Detection:* Chemiluminescence with 30 second exposure.



**This antibody is qualified for the Proximity Ligation Assay (PLA).** PLA uses paired antibodies, so please refer to the PLA page of our website for specific imaging obtained by pairing this antibody with other qualified antibodies. The above image shows representative results for PLA using three color fluorescence, including DAPI stained nuclei (blue), phalloidin stained cytoplasmic F-actin (green), and PLA positive signal (red).

## MATERIAL SAFETY DATA SHEET

### CONTENTS

This product contains Goat immunoglobulin G (IgG) protein in Tris-citrate/phosphate buffer, pH 7 to 8 containing 0.1% Sodium Azide.

### INGREDIENT DESCRIPTIONS

#### HAZARDOUS:

Sodium Azide (NaN<sub>3</sub>): Azide forms explosive chemical compounds with lead and copper plumbing. Care must be taken to wash waste down drains with large volumes of water. LD50 oral mouse 27 mg/kg. Wash all affected areas with large volumes of water and if swallowed consult your physician immediately.